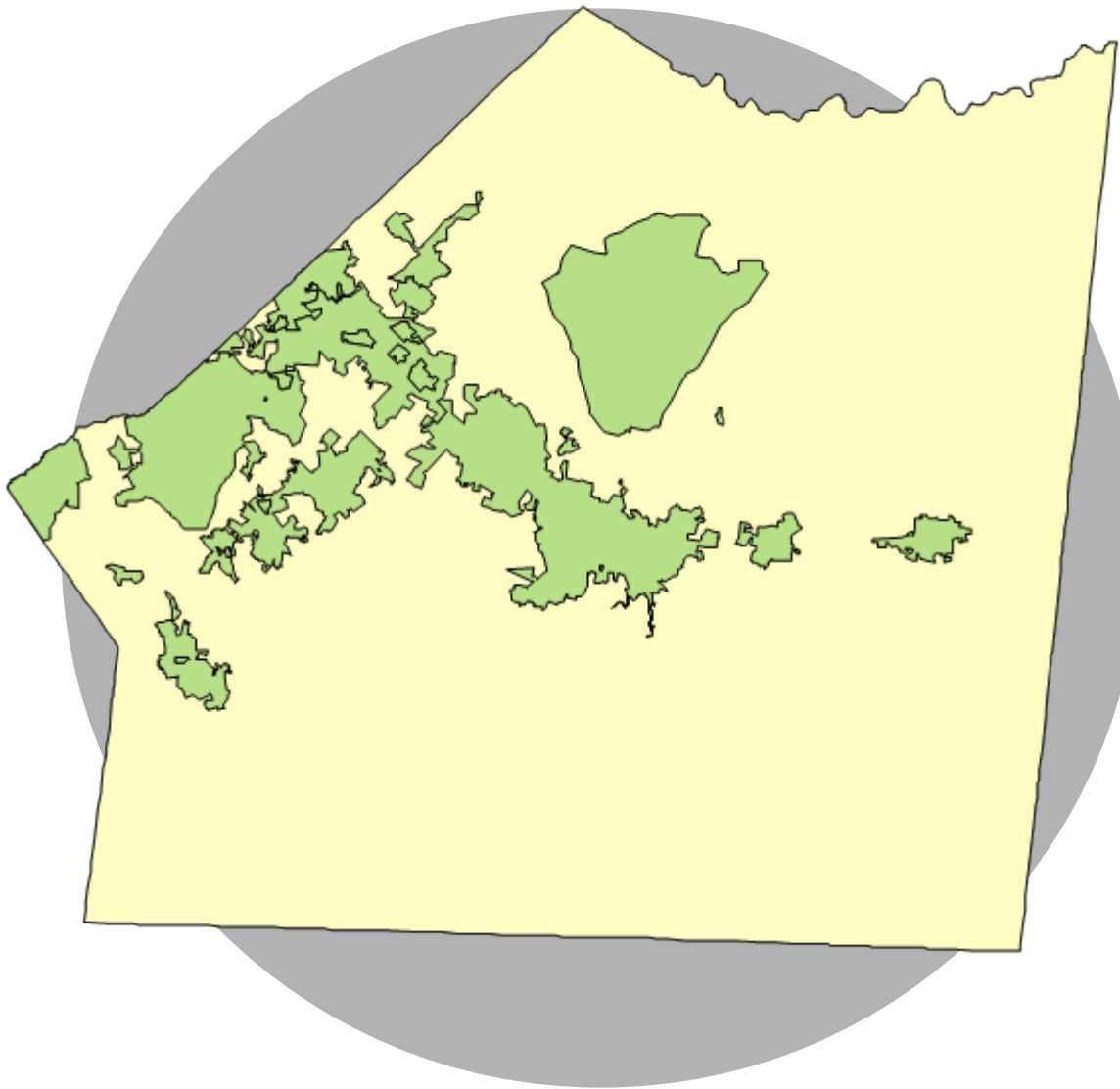




Early Care & Education Demographics Report

.....
Union County as of December 31, 2008



Contents

.....

Early Care & Education Demographics Report Union County as of December 31, 2008

Population Statistics.....	Page 1
Union County At a Glance.....	Page 2
Early Education Demographics.....	Page 3
Early Education Programs by Age of Children Served.....	Page 5
Licensed Child Care Program Features.....	Page 6
Child Care Program Supply Trends.....	Page 8
Child Care Demand.....	Page 9
Child Care Subsidy Information.....	Page 10
About Union County.....	Page 11
Definitions.....	Page 12

Statistics in this report are based on information gathered from Child Care Resources Inc.'s comprehensive database of family child care homes, child care centers, part-day preschools, Head Start programs and public pre-kindergartens.

To ensure accuracy of the data, Child Care Resources Inc. annually surveys all early care and education programs in Union County in regard to their programs (licensing, capacity, curriculum, hours of operation, fees, etc.). The database is also updated weekly based on licensing information provided by the North Carolina Division of Child Development and provider reports. Daily updates are made to reflect changes in status or programming throughout the year. Statistics regarding population and income, which are gathered from various sources, are the most current available.

Child Care Resources Inc. publishes and distributes this report semi-annually. For more information regarding this report or about early care and education or school-age programs in Mecklenburg, Cabarrus or Union County, contact *Child Care Search* at 704-348-2181.

UNION COUNTY POPULATION STATISTICS

Total Population

	2006	2007	2008
Mecklenburg County	831,237	862,835	892,606
Cabarrus County	156,863	164,379	170,509
Union County	170,685	182,380	192,452
North Carolina	8,869,655	9,069,370	9,240,289

Source: Demographic and Economic Analysis Section, NC Office of State Budget and Management estimates and projections revised June 3, 2008; most recent data available.

Child Population

	2006	2007	2008
0-2 years	9,051	9,512	9,911
3-4 years	6,006	6,172	6,448
5 years	3,004	3,117	3,144
6-13 years	20,146	22,112	23,700
Total	38,207	40,913	43,203

Source: Demographic and Economic Analysis Section, NC Office of State Budget and Management; estimates and projections revised June 3, 2008; most recent data available.

All Women with Related Children Under 18 Years

	2005	2007
Number of women	24,029	28,918

Source: 2005 and 2007 American Community Survey (tables B11004, sum of figures for families: Married couple family; With children under 18 years and other family; Female householder, no husband present; With related children under 18 years.).

Pregnancies and Births - Ages 15-19

	2000	2005	2007
Live Births	300	245	254
Birth Rate*	73.6	44.4	41.8
Pregnancies	355	273	309
Pregnancy Rate*	87.1	54.8	50.8

*per 1,000

Source: State Center for Health Statistics, 2000, 2005 and 2007

Women Ages 20-64 in the Labor Force

	2005	2007
With own children under 6 only*	3,586	4,676
With own children under age 6 and ages 6-18*	5,711	2,399
With own children ages 6-18 only*	9,656	9,885
*Single living in poverty w/children <5**	1,129	1,115

Source: 2005 and 2007 American Community Survey, tables B23003* and B17010**

Pregnancies and Births - Ages 15-44

	2000	2005	2007
Live Births	2,136	2,389	2,808
Birth Rate*	73.9	74.4	73.8
Pregnancies	2,460	2,790	3,164
Pregnancy Rate*	85.1	86.9	83.2

*per 1,000

Source: State Center for Health Statistics, 2000, 2005 and 2007

Households with Own Children Under Age 6*

	2000	2005	2007
Lives with two parents (both working)	4,783	6,119	7,387
Lives with father only (working)	382	889	1,166
Lives with mother only (working)	1,194	1,742	1,480
Lives with two parents (one working)	4,290	5,139	5,536
Not in labor force	892	511	1,224
Total Households	11,541	14,400	16,793

*By Family Configuration and Employment Status

Source: 2000, 2005 and 2007 American Community Survey, table B23008

Income Ranges for Union County Households

	2000	2005	2007
< \$10,000	2,883	4,378	2,474
\$10,000-\$14,999	1,842	1,902	2,552
\$15,000-\$24,999	3,878	4,721	5,251
\$25,000-\$34,999	4,819	7,395	5,305
\$35,000-\$49,999	7,881	9,931	11,125
\$50,000-\$74,999	10,824	11,351	12,401
\$75,000+	11,243	17,051	24,116
Total Households	43,370	56,729	63,224

Source: 2000, 2005 and 2007 American Community Survey, table B19001

Families and Poverty (with related children)

	2000	2005	2007
All families	34,553	43,292	50,866
Families living below poverty level*	2,010	3,585	3,076
All families w/children < 5	8,727	11,217	13,046
All w/children < 5 below poverty level*	783	1,647	1,815
All families w/children under 18	18,474	25,304	30,634
All w/children < 18 below poverty level*	1,470	2,742	2,740

* 2000 data based on 1999 income data

Source: 2000, 2005 and 2007 American Community Survey, table B17010

Note: Each year the US Department of Health and Human Services (HHS) publishes Federal Poverty Guidelines as noted on page 11 of this report.

Children and Poverty

	2000	2005	2007
All children < 18	34,754	44,627	51,212
All < 18 below poverty level*	3,713	5,837	4,447
All children < 5	10,040	12,916	14,790
All < 5 below poverty level*	1,187	2,133	1,700
All children 5 to 18	24,714	31,711	36,422
All 5 to 18 below poverty level*	2,526	3,704	2,747

* 2000 data based on 1999 income data

Source: 2000, 2005 and 2007 American Community Survey, table B17001

Note: Each year the US Department of Health and Human Services (HHS) publishes Federal Poverty Guidelines as noted on page 11 of this report.

UNION COUNTY AT A GLANCE

Child Care Demand

Child Population vs Child Population w/ Working Parents

Age	Child Population in Family Households		Children with Working Parents - all parents in home employed	
	Number	%	Number	%
0-6	16,654	34%	10,033	60%
6-18	31,802	66%	20,053	63%
Total	48,456	100%	30,086	62%

Source: 2007 American Community Survey, tables B09001 and B23008

Child Care Quality

Star Ratings of Licensed Child Care Programs (Child Care Centers and Family Child Care Homes)

Star Rating	Number	Percent of Star Rated Programs	Percent of Total Licensed Programs (117)
1	14	13%	12%
2	13	12%	11%
3	9	8%	8%
4	29	27%	25%
5	41	39%	35%
Total	106	100%	91%

Source: Child Care Resources Inc. (12/31/2008)

Union County Licensed Child Care Programs That Have Transitioned to the Two Component Star Rated License System

Points	Child Care Centers			Family Child Care Homes		
	3-stars	4-stars	5-stars	3-stars	4-stars	5-stars
1 point						
2 points	3			2	1	
3 points		1				
4 points	2	5			1	
5 points		2	3	1		1
6 points		9	2			1
7 points		4	29	1	6	5
Total	5	21	34	4	8	7

Points	Child Care Centers			Family Child Care Homes		
	3-stars	4-stars	5-stars	3-stars	4-stars	5-stars
1 point				1		
2 points	1	3		1	4	
3 points		7		1	2	
4 points	3	9	8	1		
5 points		1	6		1	5
6 points		1	20		1	2
Total	5	21	34	4	8	7

Notes: Research demonstrates that programs with better educated staff and higher program standards have better child outcomes. The above chart represents programs and their corresponding points. Programs are awarded a license based on the total number of points in staff education, program standards and additionally programs may elect to seek a quality point: 4-6 points = 2 stars; 7-9 points = 3 stars; 10-12 points = 4 stars; and, 13-15 points = 5 stars. Of the 79 programs noted above, 71 (90%) have earned the additional quality point.

Source: Child Care Resources Inc. (12/31/2008)

Availability

Licensed Child Care Programs

Type of Care	Number of Programs	Total Capacity	% of Programs Accepting Subsidy
Star Rated CCC's*	74	7,270	78%
Temporary CCC's*	4	295	0%
Provisional/Probationary CCC's*	0	0	0%
GS 110-106	7	904	57%
Star Rated FCCH *	32	208	53%
Part Day Preschools	18	1,449	N/A
Head Start/Early Head Start **	3	212	N/A
Public Pre-K Programs***	18	619	N/A

*CCC = Child Care Centers; FCCH = Family Child Care Homes

**See page five (5) for more details.

***More at Four children enrolled in community-based sites are included with CCC's

Note: Number of programs and capacity do not total

Source: Child Care Resources Inc. (12/31/2008)

Affordability

Child Care Fees

Age of Children	CCC's**		FCCH's***	
	Average Full Time Weekly/Annual Fees	Average Full Time Weekly/Annual Fees	Average Full Time Weekly/Annual Fees	Average Full Time Weekly/Annual Fees
Infants	\$153	\$7,956	\$143	\$7,436
Toddlers	\$148	\$7,696	\$142	\$7,384
Twos	\$141	\$7,332	\$137	\$7,124
Threes	\$135	\$7,020	\$127	\$6,604
Fours	\$134	\$6,968	\$132	\$6,864
S/A (PT)*	\$60	\$2,400	\$66	\$2,640
S/A (FT)*	\$112	\$1,344	\$118	\$1,416

*S/A = School-Age; PT = Part-time (40 wks/yr); FT = Full-time - summers and holidays (12 wks/yr)

**CCC = Child Care Centers

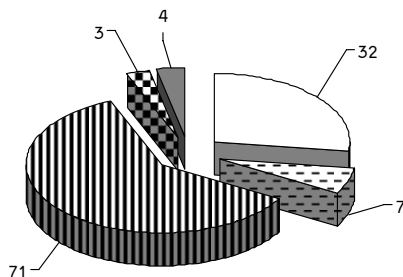
***FCCH = Family Child Care Home

Source: Child Care Resources Inc. (12/31/2008)

Early Education Demographics

Licensed Early Childhood Programs

Total = 117

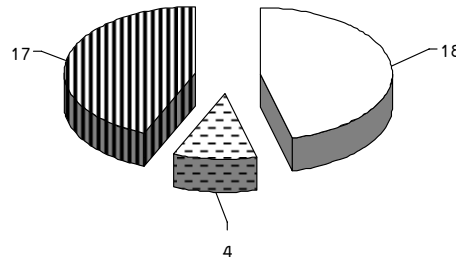


- Star Rated Family Child Care Homes
- Church Exempt
- ▨ Star Rated Centers (1 Public Pre-K)
- ▨ Head Start Star Rated
- Temporary

Note: The North Carolina Division of Child Development separately licenses each building in which a regulated early education program operates. Therefore, one program operating in two buildings will have two licenses.

Legally Exempt Early Childhood, School-Age Child Care and Summer Camp Programs

Total = 39



- Part-Day Preschools
- School-Age
- ▨ Public Pre-Kindergarten

Child Care Centers by Type of Licensure and Capacity

Licensed Child Care Centers with Star Ratings = 74

License	Number of Programs	Percent of Programs	Number of Slots	Percent of Slots
1 Star	6	8.11%	578	7.95%
2 Stars	8	10.81%	423	5.82%
3 Stars	5	6.76%	213	2.93%
4 Stars	21	28.38%	2,141	29.45%
5 Stars	34	45.95%	3,915	53.85%
Subtotal*	74	100.00%	7,270	100.00%

Licensed Child Care Centers without Star Ratings = 11

Church Exempt	7	63.64%	904	75.40%
Temporary C	4	36.36%	295	24.60%
Provisional	0	0.00%	0	0.00%
Subtotal*	11	100.00%	1,199	100.00%
Total*	85		8,469	

* Includes Head Start programs.

* Percentage totals are rounded to 100%.

Family Child Care Homes by Type of Licensure and Capacity

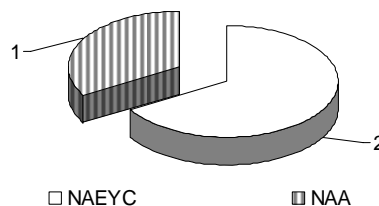
Licensed Family Child Care Homes with Star Ratings = 32

License	Number of Programs	Percent of Programs	Number of Slots	Percent of Slots
1 Star	8	25.00%	40	19.23%
2 Stars	5	15.63%	34	16.35%
3 Stars	4	12.50%	23	11.06%
4 Stars	8	25.00%	55	26.44%
5 Stars	7	21.88%	56	26.92%
Subtotal*	32	100.00%	208	100.00%

* Percentage totals are rounded to 100%.

Nationally Accredited Full-Time Child Care Centers and After-School Programs

- Total Capacity = 371
- Number of Programs = 3



NAEYC - National Association for the Education of Young Children
NAA - National Afterschool Association

Private Part-Day Preschool Only Programs

- Number of Programs = 18
- Total Capacity = 1,449

Note: Based on desired capacity



Child Care Resources Inc. Union County Early Education Demographics Report

Average Fees for Full-Time Child Care

Age	Family Child Care Homes (FCCH) Weekly Cost	Average Annual FCCH Cost	Percent of annual income spent on child care for one child in a family of three in Union County*	Child Care Centers Weekly Cost	Average Annual Center Cost	Percent of annual income spent on child care for one child in a family of three in Union County*
Infant	\$143	\$7,436	18.35%	\$153	\$7,956	19.63%
Toddler	\$142	\$7,384	18.22%	\$148	\$7,696	18.99%
2 years old	\$137	\$7,124	17.58%	\$141	\$7,332	18.09%
3 years old	\$127	\$6,604	16.30%	\$135	\$7,020	17.32%
4 years old	\$132	\$6,864	16.94%	\$134	\$6,968	17.20%

Average Fees for School-Age Care

School-age (part-time) 40 weeks of school year care	\$66	\$2,640	6.51%	\$60	\$2,400	0.59%
School-age (full-time) 12 weeks of care during summer/holidays	\$118	\$1,416	3.49%	\$112	\$1,344	3.32%

According to CCRI's provider database, the average annual fee for child care in Union County is:

Family child care for 0-5 year old children	\$7,082
Center-based care for 0-5 year old children	\$7,394
School-age care (year round in a FCCH)	\$4,056
School-age care (year round in a Child Care Center)	\$3,744

*Based on annual income of \$40,522 (income needed for a family of one parent, one infant, and one preschool child as reported by the North Carolina Justice and Community Development Center 2008, based on 2007 data)

Source: Child Care Resources Inc.'s database as of December 31, 2008

Average Fees for Star Licensed Child Care Centers Per Week*

	Infant	Toddler	2 Year old	3 Year old	4 Year old	School-age (Full)	School-age (Part)
Average	\$157	\$151	\$144	\$137	\$136	\$112	\$61
1 Star	\$158	\$152	\$149	\$140	\$136	\$120	\$60
2 Stars	\$123	\$121	\$117	\$111	\$111	\$109	\$58
3 Stars	\$155	\$150	\$134	\$129	\$129	\$108	\$65
4 Stars	\$162	\$157	\$145	\$141	\$139	\$118	\$71
5 Stars	\$181	\$174	\$170	\$155	\$155	\$107	\$54

Data based on child care centers' and family child care homes' self-report to Child Care Resources Inc. of fees charged.

*Weighted averages

Average Fees for Star Licensed Family Child Care Homes Per Week*

	Infant	Toddler	2 Year old	3 Year old	4 Year old	School-age (Full)	School-age (Part)
Average	\$143	\$142	\$137	\$127	\$132	\$118	\$66
1 Star	\$170	\$173	\$151	\$148	\$148	\$148	n/a
2 Stars	\$118	\$118	\$117	\$111	\$111	\$111	\$71
3 Stars	\$126	\$123	\$124	\$116	\$112	\$91	\$70
4 Stars	\$162	\$159	\$154	\$129	\$149	\$118	\$68
5 Stars	\$145	\$137	\$136	\$129	\$129	\$121	\$60

Source: Child Care Resources Inc.'s database as of December 31, 2008

Child Care Resources Inc. (CCRI) maintains a referral database of licensed and legally exempt early education programs in Union County. The North Carolina Division of Child Development (NCDCD) provides CCRI with basic information about licensed programs, which CCRI supplements with information gathered directly from program operators. Of the 117 NCDCD licensed early childhood and school-age programs in Union County, 104 (89%) have elected to provide CCRI with more program details than publicly available through the NCDCD. CCRI's database also includes information about 39 legally exempt (non-regulated) early education programs (e.g. part day preschool programs, summer camps and other school-age programs).

Early Education Programs by Age of Children Served

Licensed Family Child Care Homes

Ages Served	# of Programs Serving Those Age Groups	Ages Served	# of Programs Serving Those Age Groups
Infant (0-12 months)	30	Fives	30
Toddler (12-24 months)	31	School-Age	28
Twos	31	Before & After School	12
Threes/Fours	30		

Family Child Care Homes reporting this information: 32
Combined Capacity: 208 children

Licensed Child Care Centers

Ages Served	# of Programs Serving Those Age Groups	Ages Served	# of Programs Serving Those Age Groups
Infant (0-12 months)	41	Fives	82
Toddler (12-24 months)	41	School-Age	65
Twos	49	Before & After School	20
Threes/Fours	54		

Child Care Centers reporting this information: 85
Combined Capacity: 8,469 children

Private Part-Day Preschool Only Programs

Ages Served	# of Programs Serving Those Age Groups	Ages Served	# of Programs Serving Those Age Groups
Infant (0-12 months)	5	Threes/Fours	18
Toddler (12-24 months)	8	Fives	11
Twos	16		

Part-Day Preschool Programs reporting this information: 18
Total Capacity: 1,449 children

Publicly Sponsored Pre-K Sites

Ages Served	# of Sites Serving Those Age Groups	# of Classrooms	Capacity
Licensed Head Start (3 and 4 year olds)	3	15	212*
Public Pre-Kindergarten (Title One 4 year olds)	5	17	231**
More at Four (4 year olds)	20	26	522***
Exceptional Children's Program (3 and 4 year olds)	12	22	322****

Publicly Sponsored Pre-K Sites reporting this information: 26
Total Capacity: 923

*Includes 40 Early Head Start children.

**Does not include Exceptional Children enrolled at Pre-K sites. Slots are all dual-funded with More at Four.

***325 More at Four children are enrolled at twelve (12) Pre-K sites. Of those, 259 are dual-funded with Title One and/or Exceptional Children funding. 92 children are enrolled in five (5) community-based child care centers and 105 children are enrolled at three (3) Head Start sites, all slots are dual-funded.

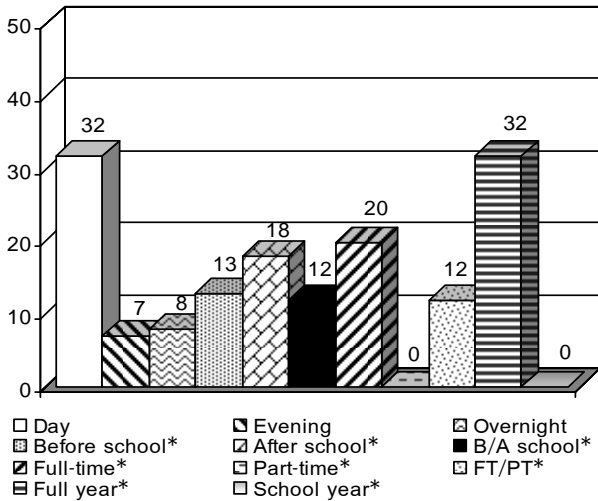
****There are am and pm classes serving Exceptional Children at Walter Bickett Education Center. Some slots are dual-funded with More at Four.

Note: Total number of sites, classrooms and capacities do not total.
Does not include summer camp programs.

Source: Child Care Resources Inc.'s database of 152 programs supplying the above listed information as of December 31, 2008. These programs are able to serve a total of 10,520 children.

Licensed Child Care Program Features

Family Child Care Home Schedules

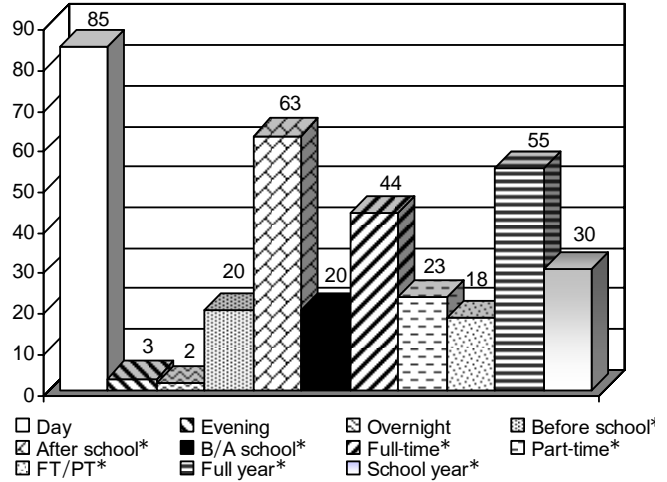


32 Licensed Family Child Care Homes reporting

*Based on day shift

Source: Child Care Resources Inc.'s database as of December 31, 2008

Child Care Center Schedules

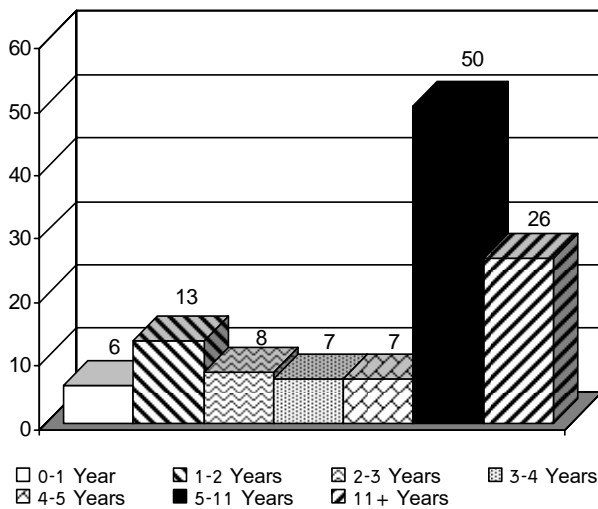


85 Licensed Child Care Centers reporting

*Based on day shift

Source: Child Care Resources Inc.'s database as of December 31, 2008

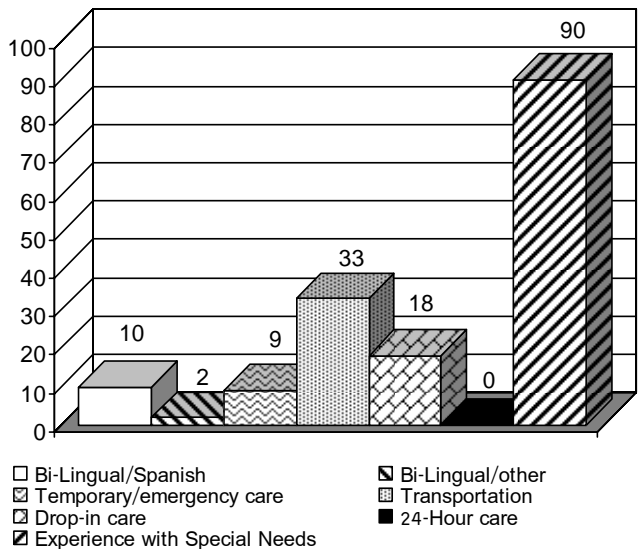
Years in Operation - Licensed Facilities



117 Licensed Child Care Centers & Family Child Care Homes reporting

Source: Child Care Resources Inc.'s database as of December 31, 2008

Special Services Offered by Licensed Facilities



117 Licensed Child Care Centers & Family Child Care Homes reporting

Source: Child Care Resources Inc.'s database as of December 31, 2008

Licensed and Legally Exempt Family Child Care Homes by Zip Code

Zip Code	Programs	Capacity	Zip Code	Programs	Capacity
28079	6	39	28112	2	13
28103	2	16	28173	2	13
28104	9	57	28174	1	8
28110	10	62			

Licensed and Legally Exempt Child Care Centers by Zip Code*

Zip Code	Programs	Capacity	Zip Code	Programs	Capacity	Zip Code	Programs	Capacity
28079	12	1,621	28110	31	2,587	28174	5	449
28103	6	375	28112	9	680			
28104	8	1,135	28173	14	1,314			

Private Part-Day Preschool Only Programs by Zip Code

Zip Code	Programs	Capacity	Zip Code	Programs	Capacity
28079	4	156	28110	4	310
28103	2	55	28112	1	144
28104	3	403	28173	4	381

Publicly Sponsored Pre-K Programs by Zip Code **

Zip Code	Programs	Capacity	Zip Code	Programs	Capacity	Zip Code	Programs	Capacity
28079	1	30	28110	6	297	28174	3	71
28103	1	28	28112	5	306			
28104	1	30	28173	4	69			

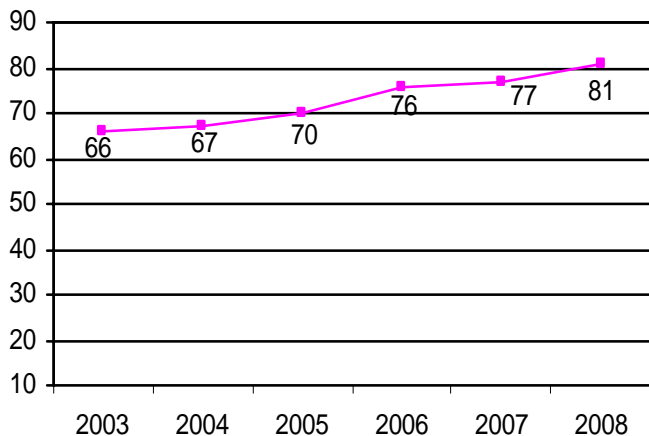
*More at Four classrooms in the community are included with licensed and legally exempt centers.

**Pre-K programs, Head Start programs and More at Four classrooms at Pre-K sites are included with publicly sponsored Pre-K programs.

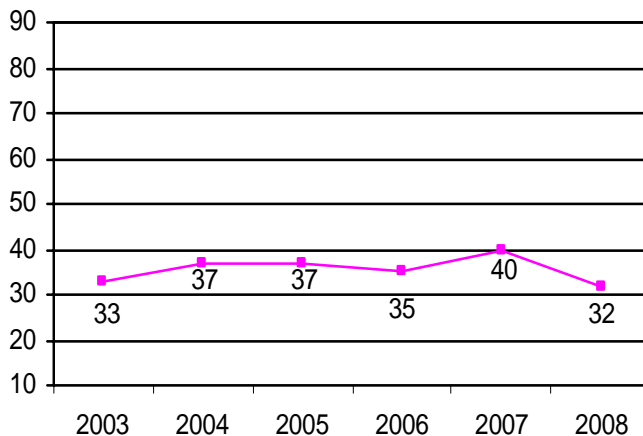
Source: Child Care Resources Inc.'s database of 156 reporting programs with a total capacity of 10,649 as of December 31, 2008

Child Care Program Supply Trends Child Care Centers and Family Child Care Homes

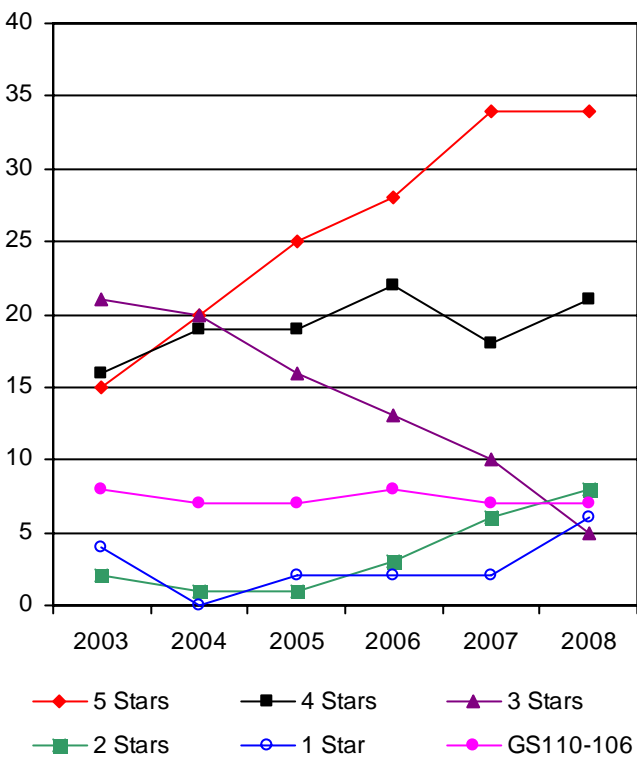
Licensed Child Care Centers 2003-2008



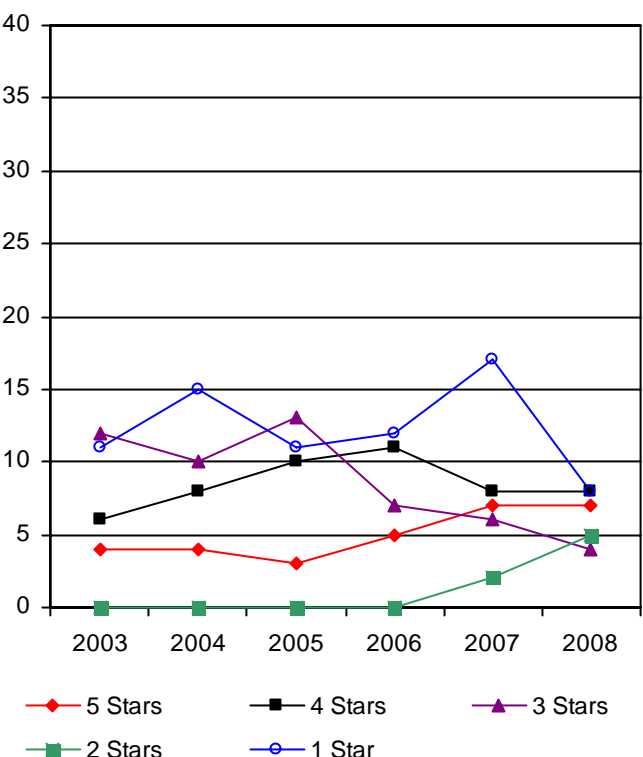
Licensed Family Child Care Homes 2003-2008



Star Rated License Trends for Child Care Centers 2003-2008



Star Rated License Trends for Family Child Care Homes 2003-2008



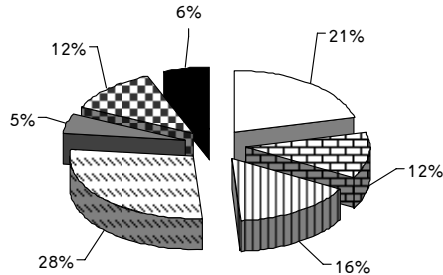
Note: Numbers include star rated and GS110-106 only

Source: Child Care Resources Inc.'s database (June 30, 2008)

Child Care Demand N = Number

Ages of Children Served

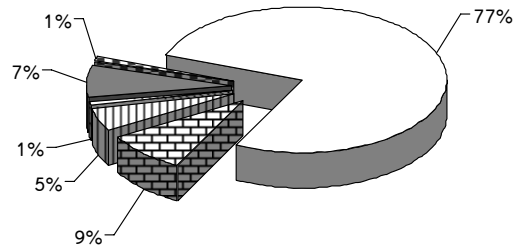
N = 289 Children



- Pre-natal/under one (21%)
- ▤ One (12%)
- ▨ Two (16%)
- ▩ Three/Four (28%)
- Five (5%)
- ▧ Six to Eight (12%)
- Nine and over (6%)

Location Preference

N = 289 Children

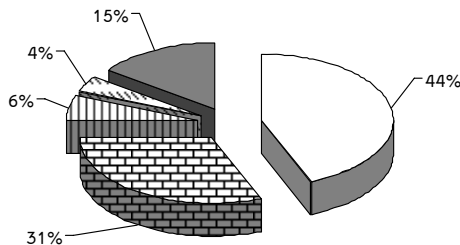


- Near home (77%)
- ▨ Zip Code (5%)
- Near home or employer (7%)
- ▤ Near school (9%)
- ▩ Employment (1%)
- Other (1%)

Note: Families can choose more than one option.

Type of Care Preferred

N = 490 Responses

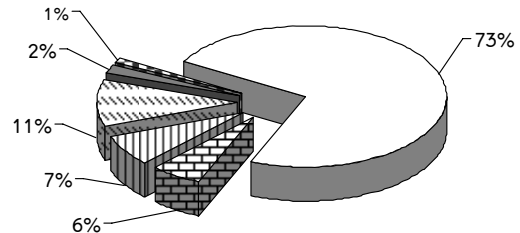


- Child Care Centers (44%)
- ▨ Family Child Care Homes (31%)
- ▩ Summer Camps (6%)
- Part-Day Preschools (15%)
- ▧ School-Age Programs (4%)

Note: Families can choose more than one option for care.

Primary Reason Child Care Needed

N = 289 Children



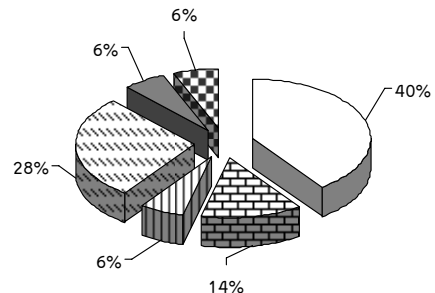
- Employment (73%)
- ▨ School/training (7%)
- Relocation (2%)
- ▤ Seeking employment (6%)
- ▩ Child socialization (11%)
- Dissatisfied with program (1%)

Calls for Child Care Referrals

Child Care Search, a child care resource and referral service offered by Child Care Resources Inc. (CCRI), provides free consumer education, information and supportive counseling to Union County families to enable them to evaluate and make well-informed decisions about early care and education programs for their children. Families access the service by calling a publicly-listed Union County phone number that is answered by a parent counselor in CCRI's Mecklenburg County office. This service is funded by Child Care Resources Inc., NC Division of Child Development and Union Smart Start.

Reasons Parents Did Not Find Child Care

N = 90 Responses

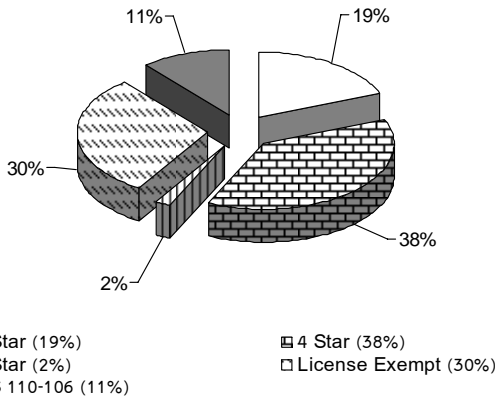


- Preferred care not available (40%)
- ▨ Hour of operation (14%)
- ▩ Facility's schedule (6%)
- Cost (28%)
- Other (6%)
- ▧ Waiting for subsidy (6%)

Note: Numbers are based on a 39% sample of families searching for care and parents can give more than one response. Numbers have been extrapolated to the whole.

Child Care Demand (continued) N = Number

License Status of Programs Where Families Found Child Care N = 97 Responses

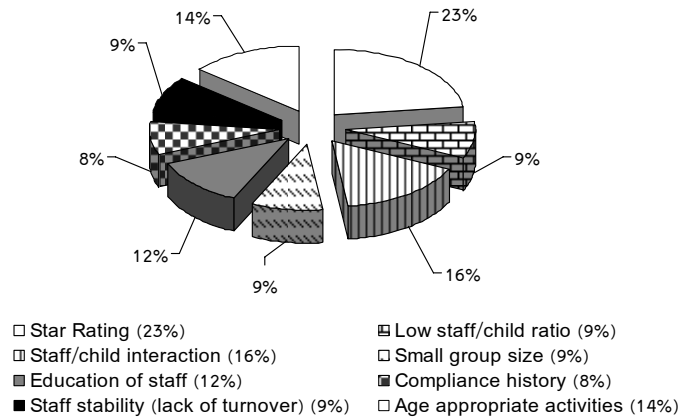


*No parents selected for 1star, 2 stars or temporary programs in Union County

Note: Numbers are based on a 39% sample of families searching for care. Numbers have been extrapolated to the whole.

Source: Child Care Resources Inc.'s database January 1, 2008 – December 31, 2008

Quality Indicators Parents Used When Searching for Child Care N = 215 Responses



Note: Families can choose more than one quality indicator; therefore, percentages may total more than 100%. Numbers based on a 39% sample of families searching for care. Numbers have been extrapolated to the whole.

Source: Child Care Resources Inc.'s database January 1, 2008 – December 31, 2008

Child Care Subsidy

Child Care Financial Assistance

Calls received by *Child Care Search* from parents/caregivers interested in child care financial assistance in Union County are referred to the Union County Department of Social Services.

Number of Children Receiving Subsidized Care	
Number of children receiving subsidized care as of December 31, 2008	1,553
Monthly average of children receiving subsidy from Jan.1, 2008 – Dec. 31, 2008	1,558
Average monthly waiting list from January 1, 2008 – December 31, 2008	3
Waiting list for subsidized care as of December 31, 2008	0

Maximum Income Eligibility for Child Care Subsidies 8/01/2007						
Family Size	1	2	3	4	5	6
Maximum Gross Monthly/Annual Income	\$1,892/ \$22,704	\$2,475/ \$29,700	\$3,057/ \$36,684	\$3,639/ \$43,668	\$4,221/ \$50,652	\$4,804/ \$57,648
Family Size	7	8	9	10	11	12
Maximum Gross Monthly/Annual Income	\$4,913/ \$58,956	\$5,022/ \$60,264	\$5,131/ \$61,572	\$5,240/ \$62,880	\$5,350/ \$64,200	\$5,459/ \$65,508

Co-payments (% of gross monthly income):

1-3 children - 10% / 4-5 children - 9% / 6-12 children - 8%

Source: North Carolina Division of Child Development, January 1, 2008 - December 31, 2008

Source: North Carolina Division of Child Development

UNION COUNTY FACTS

Projected Total Population

	2006	2007	2008
Population	170,685	182,380	192,452

Source: Demographic and Economic Analysis Section, NC Office of State Budget and Management; estimates and projections revised as of June 3, 2008, most recent data available.

Seasonally Unadjusted Unemployment Rate

	2006	2007	2008
Rate	3.9	4.0	8.1

Source: North Carolina Employment Security Commission, December 2006, 2007 and 2008. 2006 and 2007 figures have been revised by ESC.

Union County:

- is the fastest growing county and school system in North Carolina
- is the 7th fastest growing county in the United States
- is the 6th largest school system in North Carolina
- has the second highest median household income in North Carolina

Source: Union County Chamber of Commerce 2007 and Union County Public Schools 2007-2008

Median Household Income and Living Income Standard

	2005	2006	2007
*Median household income	50,072	59,125	60,022
**Living Income Standard	41,640	N/A	40,522

Note: The Living Income Standard is the income needed for a family of one parent, one child and one preschool child.

*Source: 2005, 2006 and 2007 American Community Survey

**Source: NC Justice and Community Development Center 2005 and 2008 (based on 2007 data)

Child Abuse and Neglect (CAN) Data

	CAN reports for all ages (0-17)	Children found substantiated or in need of services
Ages 0-6	1,012	134
Ages 7-12	788	79
Ages 13-17	512	58
Age unknown	11	0
Total	2,323	271

Source: NC DHSS Central Registry, referrals made in FY2008

General Information

The federal poverty guidelines are determined according to family size and apply to all but two states.* These guidelines, issued each year by the Department of Health and Human Services (HHS), are a form of measurement that simplifies the poverty thresholds for administrative purposes, such as determining financial eligibility for certain programs. Listed below are the 2008 HHS guidelines.

Single individual = \$10,400
 Family of two = \$14,000
 Family of three = \$17,600
 Family of four = \$21,200

Family of five = \$24,800
 Family of six = \$28,400
 Family of seven = \$32,000
 Family of eight = \$35,600

For each additional person, add \$3,600

*Alaska and Hawaii use different guidelines due to higher living expenses

Source: Federal Register, Vol. 73, No. 15, January 23, 2008, pp 3971-3972

TANF Recipients

	2006	2007	2008
0-5 years	201	161	203
0-17 years	494	432	476

Source: North Carolina Eligibility Information System, July 1, 2006, 2007 and 2008

Food Stamp Recipients

	2006	2007	2008
0-5 years	2,033	2,139	2,185
0-17 years	4,966	5,211	5,252

Source: North Carolina Eligibility Information System, July 1, 2006, 2007 and 2008

Union County Public School System

*Pre-K Sites in Schools	18	394
Elementary Schools	29	19,385
Middle Schools	8	8,736
High Schools	10	10,029
Schools with Special Programs	2	165*

*Includes one (1) Pre-K site; in addition, seventeen (17) sites housed in UCPS elementary schools serve Pre-K children. Number includes Title 1, Exceptional Children and More at Four children enrolled at those sites.

Source: Union County Public Schools (UCPS), 2008-2009

Licensed Child Care Programs

	2006	2007	2008
Children Enrolled (0-12)	5,301	5,778	5,959
Child Care Slots	7,962	8,699	8,989
Programs	116	123	117
Staff Employed	853	987	980

Source: North Carolina Division of Child Development December 31, 2006, 2007 and 2008

Definitions

Center-Based Programs are independently operated or operate in schools, workplaces, individual homes (considered small centers), churches or synagogues. Most are open on a fixed schedule, eight or more hours per day, Monday through Friday. Children in centers are usually grouped by age. As they grow, children often move into the next age group with a different caregiver. All centers must meet state regulations for the legal operation of a child care facility.

Child Care Subsidy — Financial assistance for income eligible families to secure North Carolina Division of Child Development licensed child care while parents/guardians are working, attending school or job training activities.

Exceptional Children's Programs are public pre-kindergarten programs that assure that children with varying abilities have the opportunity to develop mentally, physically and emotionally when provided with an appropriate individualized education in the least restrictive environment with their typically developing peers. The program serves children ages three, four and those five year olds not age eligible for kindergarten. Parents have the opportunity to be actively involved in meaningful ways in their child's education. (Based on IDEA – P.L. 94-142)

GS 110-106 (Religious-sponsored child care facilities) are child care facilities or summer day camps operated by a church, synagogue or school of religious charter. While exempt from licensure, they must file a notice of intent to operate as a child care facility with the state. A religious-sponsored child care facility may choose to seek licensure, but if it does not, it must still meet state licensing requirements with the following exceptions: staff qualifications, staff training, written activity plans and developmentally appropriate activity centers.

Head Start and Early Head Start are federally-funded programs that provide free, comprehensive developmental services for children ages birth to five from low-income eligible families. These programs are child-focused and family centered.

Licensure — Legal permission, granted by the North Carolina Division of Child Development, to operate a child care facility for more than two children for more than four hours a day. A license is issued according to the rules and regulations set forth by federal and state laws or local ordinances pertaining to a child's health, safety and welfare.

Licensed Family Child Care Homes (FCCH) are operated by individuals who provide care in their homes for more than two children who are not related to them. These programs offer a home-like setting that provide the opportunity for siblings to stay together. A licensed FCCH may care for up to eight children, with no more than five preschool children in care at any given time. The caregiver's own preschool-age children must be included in the number of preschoolers. However, their school-age children are not counted for licensing purposes. FCCH's must provide age-appropriate toys and activities, nutritious meals and snacks and meet basic health and safety standards. All FCCH's must meet licensing regulations for the legal operation of a child care facility.

Legally Exempt Family Child Care Homes are allowed to care for two non-related children in addition to their own without being licensed by the state.

Montessori Curriculum is an individualized program of education based on the philosophy that children learn through their own experiences in a carefully prepared, ordered and responsive environment. Included in the environment are didactic and sequenced materials geared toward promoting children's education in four areas: development of the senses, conceptual or academic development, competence in practical life activities and character development.

More at Four is a statewide, voluntary program that prepares eligible four-year-old children for school success by providing them with high quality pre-kindergarten experiences. The curricula used are child-centered, have a literacy and language focus and include parent participation. More at Four classrooms operate in centers and school settings for six hours per day, follow the public school calendar and have no more than a one-to-nine staff-to-child ratio.

NAA Accreditation — Accreditation standards for programs offering care to school-age children. The standards were developed by the National AfterSchool Association (NAA), a professional support network promoting quality programs for children and youth in their out-of-school time. NAA accredits programs that meet these quality standards, based on a self-study and a NAA Endorser's ratings of compliance with the standards.

Definitions (Cont'd.)

NAEYC Accreditation — Accreditation standards for early education programs (full-day and part-day). The National Association for the Education of Young Children (NAEYC) has developed a set of quality standards that programs must meet to receive accreditation. Receipt of accreditation indicates that an early education program provides a high quality learning environment for children that exceeds the threshold for quality set by licensing requirements. Programs must complete a self study, submit an application, and have ratings verified by an NAEYC Validator.

School-Age Child Care refers to programs for children before and/or after school hours and during school holidays and vacations. Family child care homes, child care centers and schools typically offer this type of care. Programs that operate for four hours or less per day are license-exempt, but may voluntarily seek state licensure or pursue national accreditation.

Part-Day Preschools operate for four hours or less per day serving children between the ages of birth - five years. License-exempt part-day preschools may voluntarily seek licensure and may pursue national accreditation. Typically, part-day programs operate on the same calendar year as the public school system, serving families where one parent is not employed full-time. Faith organizations and community-based not-for-profit organizations are the primary sponsors of part-day programs.

Public Pre-Kindergarten Programs include center-based classrooms for four-year olds that are fully or partially publicly funded and operate under the direction of state, local and federal education and human service agencies.

Probationary License — A facility may be placed on probationary status when NCDCCD determines that violations of child care requirements have been willful, continual or hazardous to the health or safety of children. This status shall not exceed one year.

Provisional License may be issued for up to 12 months when NCDCCD determines that an operator is making a reasonable effort to comply fully and maintain compliance with all licensing requirements, to give the operator an opportunity to correct violations regarding building, fire and sanitation requirements and/or when child abuse or neglect occurred in a child care facility.

Star Rated License — Programs that apply for a 2- to 5-star license will be assessed under a revised two-component system that uses 1) Program Standards and 2) Staff Education to determine the license points for the star rating. In addition, all child care programs, regardless of the type of license they have, will also be required to maintain a 75% Compliance History. An additional “quality point” may be earned by child care programs to meet additional education or programmatic criteria not addressed under the Program Standards or Staff Education components.

Summer Day Camps are generally designed for school-age children and operate during the day for less than four months. They may be offered by child care centers, colleges, recreation sites, faith-based groups or other sponsoring organizations. This type of program is exempt from state licensure.

Temporary License is given by the North Carolina Division of Child Development for a period of six months to a new program or to a previously licensed program (when a change in ownership or location occurs) after which it may apply for a higher than one star rating.

**For more information
call (704) 376-6697**



Child Care Resources Inc. partners with and is supported by an array of local and state organizations and agencies including Mecklenburg County Department of Social Services, United Way of Central Carolinas, Smart Start of Mecklenburg County, Cabarrus County Partnership for Children, Union Smart Start and North Carolina Division of Child Development. In addition, Child Care Resources Inc. receives support from foundations, corporations and individual donors.

Child Care Resources Inc.'s Child Care Search referral service is partially funded by Union Smart Start, United Way of Central Carolinas, North Carolina Division of Child Development and other private and public sector supporters.

Main /Administrative Offices

4601 Park Road, Suite 500
Charlotte, NC 28209
(704) 376-6697

Cabarrus County Office

2353 Concord Lake Road, Suite 160
Concord, NC 28025
(704) 786-1023

Union County Office

105-A Cedar Street
Monroe, NC 28110
(704) 238-8810

**email: mailbox@childcareresourcesinc.org
www.childcareresourcesinc.org**

© 2006, Child Care Resources Inc.



North Carolina Division
of Child Development