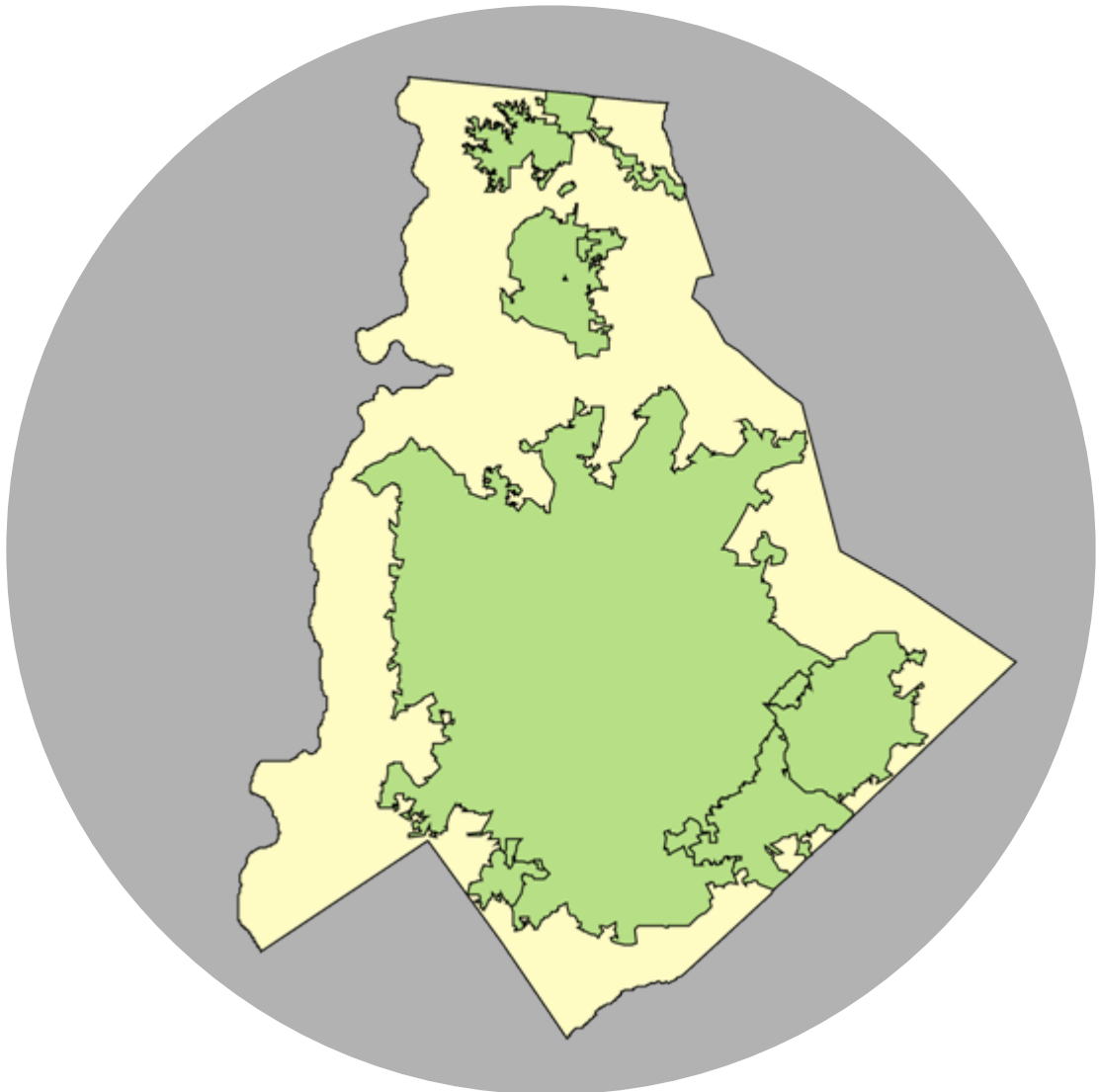




Early Care & Education Demographics Report

.....
Mecklenburg County as of December 31, 2008





Contents

.....

Early Care & Education Demographics Report

Mecklenburg County as of December 31, 2008

Population Statistics.....	Page 1
Mecklenburg County At a Glance.....	Page 2
Early Education Demographics.....	Page 3
Early Education Programs by Age of Children Served.....	Page 5
Licensed Child Care Program Features.....	Page 6
Child Care Program Supply Trends.....	Page 8
Child Care Demand.....	Page 9
Child Care Subsidy Information.....	Page 10
About Mecklenburg County.....	Page 11
Definitions.....	Page 12

Statistics in this report are based on information gathered from Child Care Resources Inc.'s comprehensive database of family child care homes, child care centers, part-day preschools, Head Start programs and public pre-kindergartens.

To ensure accuracy of the data, Child Care Resources Inc. annually surveys all early care and education programs in Mecklenburg County in regard to their programs (licensing, capacity, curriculum, hours of operation, fees, etc.). The database is also updated weekly based on licensing information provided by the North Carolina Division of Child Development and provider reports. Daily updates are made to reflect changes in status or programming throughout the year. Statistics regarding population and income, which are gathered from various sources, are the most current available.

Child Care Resources Inc. publishes and distributes this report semi-annually. For more information regarding this report or about early care and education or school-age programs in Mecklenburg, Cabarrus or Union County, contact *Child Care Search* at 704-348-2181.

MECKLENBURG COUNTY POPULATION STATISTICS

Total Population

	2006	2007	2008
Mecklenburg County	831,237	862,835	892,606
Cabarrus County	156,863	164,379	170,509
Union County	170,685	182,380	192,452
North Carolina	8,869,655	9,069,370	9,240,289

Source: Demographic and Economic Analysis Section, NC Office of State Budget and Management; estimates and projections revised June 3, 2008; most recent data available.

Child Population

	2006	2007	2008
0-2 years	39,802	41,542	42,984
3-4 years	25,758	26,791	27,807
5 years	13,087	13,049	13,636
6-13 years	89,587	93,724	97,538
Total	168,234	175,106	181,965

Source: Demographic and Economic Analysis Section, NC Office of State Budget and Management; estimates and projections revised June 3, 2008; most recent data available.

All Women with Related Children Under 18 Years

	2000	2005	2007
Number of women	79,055	101,243	111,015

Source: 2005 and 2007 American Community Survey (tables B11004, sum of figures for families: Married couple family; With children under 18 years and other family; Female householder, no husband present; With related children under 18 years)

Pregnancies and Births - Ages 15-19

	2000	2005	2007
Live Births	1,097	1,093	1,264
Birth Rate*	52.8	39.7	43.3
Pregnancies	1,530	1,584	1,822
Pregnancy Rate*	72.8	57.5	62.4

*per 1,000

Source: State Center for Health Statistics, 2000, 2005 and 2007

Women Ages 20-64 in the Labor Force

	2005	2007
With own children under age 6 only*	14,672	16,799
With own children under age 6 and ages 6-18*	18,421	12,988
With own children ages 6-18 only*	39,059	41,122
Single living in poverty w/children <5**	4,641	3,792

Source: 2005 and 2007 American Community Survey, tables B23003* and B17010**

Pregnancies and Births - Ages 15-44

	2000	2005	2007
Live Births	12,176	13,527	14,767
Birth Rate*	71.0	72.3	74.1
Pregnancies	15,505	17,895	19,074
Pregnancy Rate*	90.4	95.7	95.7

*per 1,000

Source: State Center for Health Statistics, 2000, 2005 and 2007

Households with Own Children Under Age 6*

	2000	2005	2007
Lives with two parents (both working)	21,620	25,322	30,955
Lives with father only (working)	2,356	5,017	4,421
Lives with mother only (working)	9,190	15,501	14,901
Lives with two parents (one working)	19,898	24,372	24,515
Not in labor force	4,499	5,881	5,920
Total Households	57,563	76,093	80,712

*By Family Configuration and Employment Status

Source: 2000, 2005 and 2007 American Community Survey, table B23008

Income Ranges for Mecklenburg County Households

	2000	2005	2007
< \$10,000	17,438	22,281	18,617
\$10,000-\$14,999	10,809	14,439	15,702
\$15,000-\$24,999	27,688	37,605	33,003
\$25,000-\$34,999	34,101	36,674	35,320
\$35,000-\$49,999	44,710	48,423	52,935
\$50,000-\$74,999	58,289	58,165	71,270
\$75,000+	80,526	102,642	124,681
Total Households	273,561	320,229	351,528

Source: 2000, 2005 and 2007 American Community Survey, table B19001

Families and Poverty (with related children)

	2000	2005	2007
All families	176,621	200,587	217,946
Families living below poverty level*	11,572	17,681	16,074
All families w/children < 5	45,943	44,007	49,857
All w/children < 5 below poverty level*	4,512	6,553	6,377
All families w/children under 18	95,831	108,925	120,017
All w/children < 18 below poverty level*	8,917	14,167	12,984

* 2000 data based on 1999 income data

Source: 2000, 2005 and 2007 American Community Survey, table B17010

Note: Each year the US Department of Health and Human Services (HHS) publishes Federal Poverty Guidelines as noted on page 11 of this report.

Children and Poverty

	2000	2005	2007
All children < 18	174,249	207,842	226,646
All < 18 below poverty level*	20,425	33,242	29,779
All children < 5	50,750	64,163	70,303
All < 5 below poverty level*	6,005	10,459	9,197
All children 5 to 18	123,499	143,679	156,343
All 5 to 18 below poverty level*	14,420	22,783	20,582

* 2000 data based on 1999 income data

Source: 2000, 2005 and 2007 American Community Survey, table B17001

Note: Each year the US Department of Health and Human Services (HHS) publishes Federal Poverty Guidelines as noted on page 11 of this report.



Mecklenburg County Early Education Demographics Report

MECKLENBURG COUNTY AT A GLANCE

Child Care Demand

Child Population vs Child Population w/ Working Parents

Age	Child Population in Family Households		Children with Working Parents -all parents in home working		Children Receiving Child Care Subsidy	
	Number	%	Number	%	Number	%
0-6	81,247	37%	50,277	62%	5,379	11%
6-18	138,301	63%	99,970	72%	3,304	3%
Total	219,548	100%	150,247	68%	8,683	6%

Source: 2007 American Community Survey tables B09001, B23088 and Child Care Resources Inc. (12/31/2008)

Child Care Quality

Star Ratings of Licensed Child Care Programs (Child Care Centers and Family Child Care Homes)

Star Rating	Number	Percent of Star Rated Programs	Percent of Total Licensed Programs (796)
1	85	11%	11%
2	63	8%	8%
3	114	15%	14%
4	260	35%	33%
5	231	31%	29%
Total	753	100%	95%

Source: Child Care Resources Inc. (12/31/2008)

Mecklenburg County Licensed Child Care Programs Two Component Star Rated License System and Program Quality

Licensing Points in Program

Points	Child Care Centers			Family Child Care Homes		
	3-stars	4-stars	5-stars	3-stars	4-stars	5-stars
1 point						
2 points	34	6		41	13	
3 points	4	3		1		
4 points	9	10		4	3	
5 points	3	36	10	3	3	2
6 points	4	107	29	1	10	4
7 points	5	19	143	5	50	43
Total	59	181	182	55	79	49

Licensing Points in Education

	Child Care Centers			Family Child Care Homes		
	3-stars	4-stars	5-stars	3-stars	4-stars	5-stars
10				7		
5	3			2	6	
4	29			4	41	
36	111			30	13	
2	23	65		7	3	19
2	6	28		5	3	15
	9	89			13	15
59	181	182		55	79	49

Note: Research demonstrates that programs with better educated staff and higher program standards have better child outcomes. The above chart represents programs and their corresponding points. Programs are awarded a license based on the total number of points in staff education, program standards and additionally they may elect to seek a quality point: 4-6 points = 2 stars; 7-9 points = 3 stars; 10-12 points = 4 stars; and, 13-15 points = 5 stars. Of the 605 programs, noted above, 569 (94%) have earned the additional quality point.

Source: Child Care Resources Inc. (12/31/2008)

Availability

Licensed Child Care Programs

Type of Care	Number of Programs	Total Capacity	% of Programs Accepting Subsidy
Star Rated CCC's*	459	40,082	91%
Temporary CCC's*	15	1,948	20%
Provisional/Probationary CCC's*	2	183	0%
GS 110-106	25	2,950	31%
Star Rated FCCH *	294	2,015	55%
Part Day Preschools	74	8,228	N/A
Head Start **	7	502	N/A
Public Pre-K Programs (CMS) ***	24	3,549	N/A

*CCC = Child Care Centers; FCCH = Family Child Care Homes

**Some Head Start and More at Four children are enrolled in Charlotte-Mecklenburg Schools (CMS) sites included below with Public Pre-K; one Head Start site is not licensed; number also included in total with Star Rated Child Care Centers.

***These public Pre-K sites are not licensed and include five (5) Pre-K only sites, sixteen (16) housed in CMS elementary schools and three (3) Montessori sites.

Note: Number of programs and capacity do not total.

Source: Child Care Resources Inc. (12/31/2008)

Affordability

Child Care Fees

Age of Children	CCC's** Average Full Time Weekly/Annual Fees		FCCH's *** Average Full Time Weekly/Annual Fees	
Infants	\$180	\$9,360	\$146	\$7,592
Toddlers	\$176	\$9,152	\$144	\$7,488
Twos	\$169	\$8,788	\$140	\$7,280
Threes	\$162	\$8,424	\$137	\$7,124
Fours	\$160	\$8,320	\$135	\$7,020
S/A (PT)*	\$92	\$3,680	\$83	\$3,320
S/A (FT)*	\$145	\$1,740	\$125	\$1,500

*S/A = School-age; PT = Part-time (40 wks/yr); FT = Full-time - summers and holidays (12 wks/yr)

**CCC = Child Care Centers

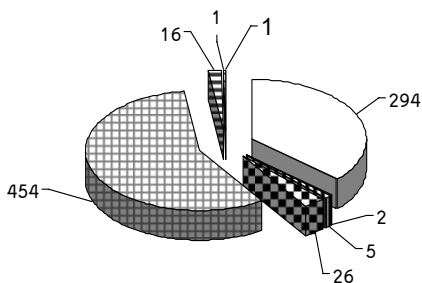
***FCCH = Family Child Care Homes

Source: Child Care Resources Inc. (12/31/2008)

Early Education Demographics

Licensed Early Childhood Programs

Total = 799

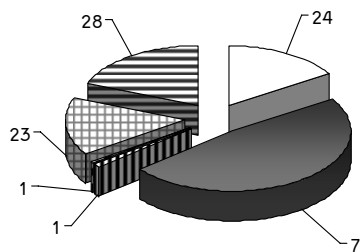


- Star Rated Family Child Care Homes
- Part-Day Only Preschools
- ▨ Star Rated Head Start Centers
- Church Exempt (1 part-day only)
- ▨ Star Rated Licensed Centers
- Temporary License (1 Head Start)
- Probationary License
- Provisional

Note: The North Carolina Division of Child Development separately licenses each building in which a regulated early education program operates. Therefore, one program operating in two buildings will have two licenses.

Legally Exempt Early Childhood, School-Age Child Care and Summer Camp Programs

Total = 148



- CMS Pre-Kindergarten
- Part-Day Only Preschools
- ▨ Family Child Care Homes
- Head Start
- School-Age
- Summer Camps

*Six (6) CMS Pre-K sites have Head Start enrolled children and six (6) have More at Four enrolled children. CMS Pre-K includes Bright Beginnings, Exceptional Children and Montessori sites.

Child Care Centers by Type of Licensure and Capacity

Licensed Child Care Centers with Star Ratings = 459

License	Number of Programs	Percent of Programs	Number of Slots	Percent of Slots
1 Star	15	3.27%	723	1.80%
2 Stars	22	4.79%	1,350	3.37%
3 Stars	59	12.85%	3,839	9.58%
4 Stars	181	39.43%	15,830	39.49%
5 Stars	182	39.65%	18,340	45.76%
Subtotal*	459	100.00%	40,082	100.00%

Licensed Child Care Centers without Star Ratings = 42

License	Number of Programs	Percent of Programs	Number of Slots	Percent of Slots
Church Exempt	25	59.52%	2,950	58.06%
Temporary C	15	35.71%	1,948	38.34%
Provisional	1	2.38%	125	2.46%
Probationary	1	2.38%	58	1.14%
Subtotal*	42	100.00%	5,081	100.00%

Total	501	45,163
--------------	------------	---------------

* Includes Head Start programs

* Percentage totals are rounded to 100%.

Family Child Care Homes by Type of Licensure and Capacity

Licensed Family Child Care Home with Star Ratings = 294

License	Number of Programs	Percent of Programs	Number of Slots	Percent of Slots
1 Star	70	23.81%	437	21.69%
2 Stars	41	13.95%	273	13.55%
3 Stars	55	18.71%	392	19.45%
4 Stars	79	26.87%	560	27.79%
5 Stars	49	16.67%	353	17.52%
Subtotal*	294	100.00%	2,015	100.00%

Licensed Family Child Care Homes without Star Ratings = 1

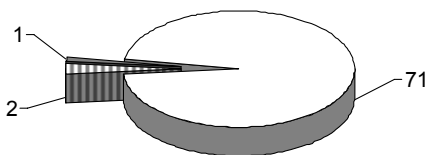
License	Number of Programs	Percent of Programs	Number of Slots	Percent of Slots
Church Exempt	0	0.00%	0	0.00%
Temporary C	1	100.00%	5	100.00%
Provisional	0	0.00%	0	0.00%
Probationary	0	0.00%	0	0.00%
Subtotal*	1	100.00%	5	100.00%

Total	295	2,020
--------------	------------	--------------

* Percentage totals are rounded to 100%.

Private Part-Day Preschool Only Programs

- Total Capacity = 8,228
- Number of Programs = 74

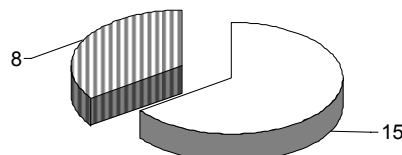


- License Exempt
- ▨ Star Rated
- GS110-106

Note: Based on desired capacity

Nationally Accredited Full-Time Child Care Centers and Part-Day Preschool Programs

- Total Capacity = 3,340
- Number of Programs = 23



- Child Care Centers
- ▨ Part-Day Preschools

Source: National Association for the Education of Young Children (12/31/2008)



Child Care Resources Inc. Mecklenburg County Early Education Demographics Report

Average Fees for Full-Time Child Care

Age	Family Child Care Homes (FCCH) Weekly Cost	Average Annual FCCH Cost	Percent of annual income spent on child care for one child in a family of three in Mecklenburg County*	Child Care Centers Weekly Cost	Average Annual Center Cost	Percent of annual income spent on child care for one child in a family of three in Mecklenburg County*
Infant	\$146	\$7,592	18.18%	\$180	\$9,360	22.42%
Toddler	\$144	\$7,488	17.94%	\$176	\$9,152	21.92%
2 years old	\$140	\$7,280	17.44%	\$169	\$8,788	21.05%
3 years old	\$137	\$7,124	17.06%	\$162	\$8,424	20.18%
4 years old	\$135	\$7,020	16.81%	\$160	\$8,320	19.93%

Average Fees for School-Age Care

School-age (part-time) 40 weeks of school year care	\$83	\$3,320	7.95%	\$92	\$3,680	8.81%
School-age (full-time) 12 weeks of care during summer/holidays	\$125	\$1,500	3.59%	\$145	\$1,740	4.17%

According to CCRI's provider database, the average annual fee for child care in Mecklenburg County is:

- Family child care for 0-5 year old children \$7,301
- Center-based care for 0-5 year old children \$8,809
- School-age care (year round in a Family Child Care Home) .. \$4,820
- School-age care (year round in a Child Care Center) \$5,420

*Based on annual income of \$41,750 (income needed for a family of one parent, one infant and one preschool child as reported by the North Carolina Justice and Community Development Center 2008, based on 2007 data.)

Source: Child Care Resources Inc.'s database as of December 31, 2008

Average Fees for Star Licensed Child Care Centers Per Week*

	Infant	Toddler	2 Year old	3 Year old	4 Year old	School-age (Full)	School-age (Part)
Average	\$181	\$176	\$169	\$162	\$161	\$145	\$93
1 Star	\$161	\$157	\$154	\$143	\$142	\$129	\$88
2 Stars	\$158	\$156	\$151	\$146	\$146	\$137	\$89
3 Stars	\$167	\$163	\$158	\$153	\$153	\$138	\$95
4 Stars	\$179	\$175	\$168	\$161	\$159	\$145	\$97
5 Stars	\$198	\$192	\$184	\$176	\$173	\$154	\$88

Data based on child care centers' and family child care homes' self-report to Child Care Resources Inc. of fees charged.

Average Fees for Star Licensed Family Child Care Homes Per Week*

	Infant	Toddler	2 Year old	3 Year old	4 Year old	School-age (Full)	School-age (Part)
Average	\$146	\$144	\$140	\$137	\$135	\$125	\$83
1 Star	\$144	\$140	\$137	\$136	\$133	\$123	\$74
2 Stars	\$138	\$135	\$132	\$128	\$128	\$120	\$78
3 Stars	\$142	\$140	\$136	\$133	\$130	\$119	\$83
4 Stars	\$150	\$147	\$143	\$139	\$135	\$127	\$86
5 Stars	\$155	\$155	\$150	\$148	\$146	\$136	\$90

*Weighted averages

Source: Child Care Resources Inc.'s database as of December 31, 2008

Child Care Resources Inc. (CCRI) maintains a referral database of licensed and legally exempt early education programs in Mecklenburg County. The North Carolina Division of Child Development (NCDCCD) provides CCRI with basic information about licensed programs, which CCRI supplements with information gathered directly from program operators. Of the 799 NCDCCD licensed early childhood and school-age programs in Mecklenburg County, 760 (95%) have elected to provide CCRI with more program details than publicly available through the NCDCCD. CCRI's database also includes information about 148 legally exempt (non-regulated) early education programs (e.g. part-day preschool programs, summer camps and other school-age programs).

Early Education Programs by Age of Children Served

Licensed Family Child Care Homes

Ages Served	# of Programs Serving Those Age Groups	Ages Served	# of Programs Serving Those Age Groups
Infant (0-12 months)	290	Fives	282
Toddler (12-24 months)	292	School Age	257
Twos	293	Before & After School	192
Threes/Fours	293		

Family Child Care Homes reporting this information: 295
Combined Capacity: 2,022 children

Licensed Child Care Centers

Ages Served	# of Programs Serving Those Age Groups	Ages Served	# of Programs Serving Those Age Groups
Infant (0-12 months)	317	Fives	478
Toddler (12-24 months)	319	School Age	407
Twos	341	Before & After School	303
Threes/Fours	466		

Child Care Centers reporting this information: 501
Combined Capacity: 45,163 children

Private Part-Day Preschool Only Programs

Ages Served	# of Programs Serving Those Age Groups	Ages Served	# of Programs Serving Those Age Groups
Infant (0-12 months)	40	Threes/Fours	74
Toddler (12-24 months)	47	Fives	55
Twos	65		

Part-Day Preschool Programs reporting this information: 74
Total Capacity: 8,228 children

Publicly Sponsored Pre-K Sites

Ages Served	# of Sites Serving Those Age Groups	# of Classrooms	Capacity
Head Start (3 and 4 year olds)	13	48	837*
CMS/Bright Beginnings/Exceptional Children's Programs (4 year olds)	19	131	2,164**
More at Four Pre-K Programs* (4 year olds)	36	120	1,832***
CMS Exceptional Children's Program (EC)(3 year olds)	9	10	108
CMS/Montessori (4 year olds)	3	17	204

Publicly Sponsored Pre-K Sites reporting this information: 59
Total Capacity: 5,091

*Includes 335 Head Start enrolled children in six (6) CMS Bright Beginnings sites and 502 enrolled in seven (7) Head Start classroom sites. At two (2) Head Start sites, a total of 54 slots are dual-funded with More at Four. Current capacity is 837; but funded enrollment is 858.

**This number includes 4 year old Exceptional Children but does not include Head Start or More At Four children enrolled at CMS Bright Beginnings sites.

***Includes 738 More at Four children enrolled at six (6) CMS Bright Beginnings sites and 1,094 enrolled in 30 community-based child care centers. Two (2) additional classrooms with 36 children will be added after January 1, 2019.

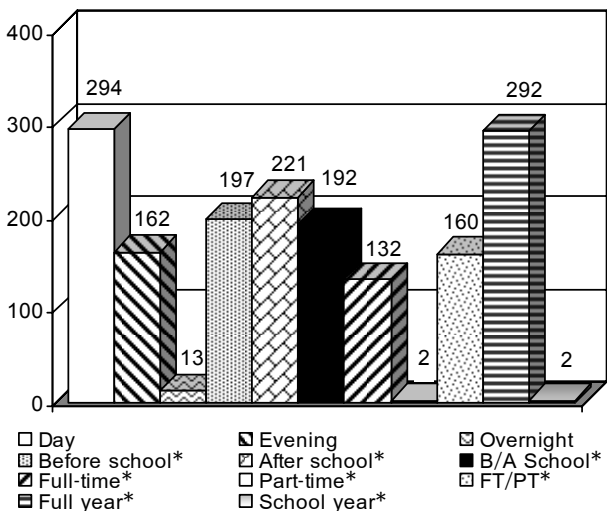
Note: At two Head Start sites, a total of fifty-four (54) slots are dual-funded Head Start and More at Four.

Note: Total number of sites, classrooms and capacities do not total.
(Does not include summer camp programs.)

Source: Child Care Resources Inc.'s database of 895 programs supplying the above listed information as of December 31, 2008. These programs are able to serve a total of 59,030 children.

Licensed Child Care Program Features

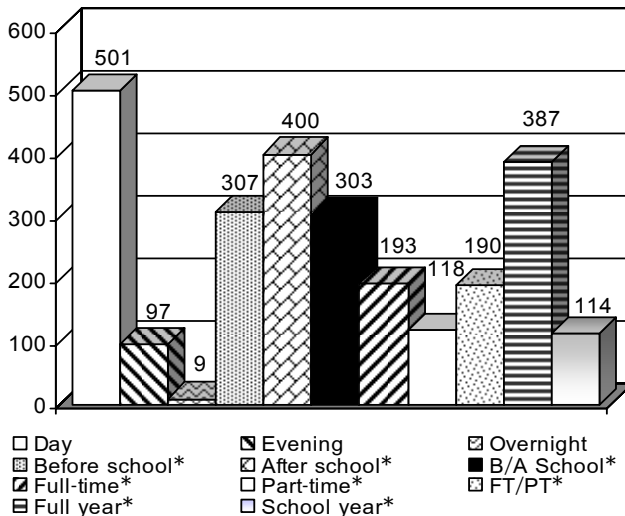
Family Child Care Home Schedules



295 Licensed Family Child Care Homes reporting
*Based on day shift

Source: Child Care Resources Inc.'s database as of December 31, 2008

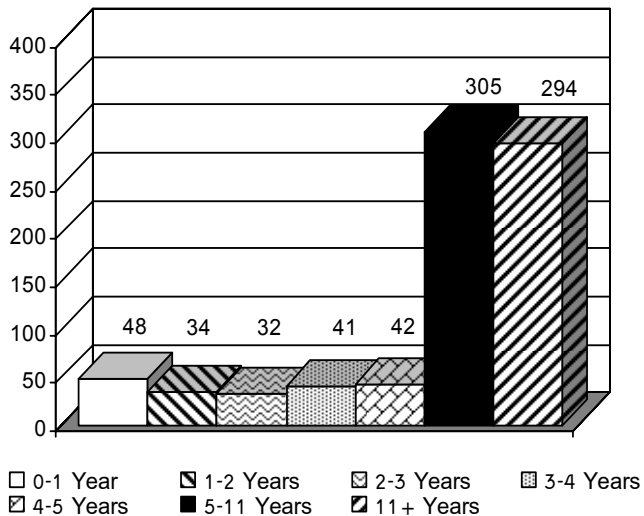
Child Care Center Schedules



501 Licensed Child Care Centers reporting
*Based on day shift

Source: Child Care Resources Inc.'s database as of December 31, 2008

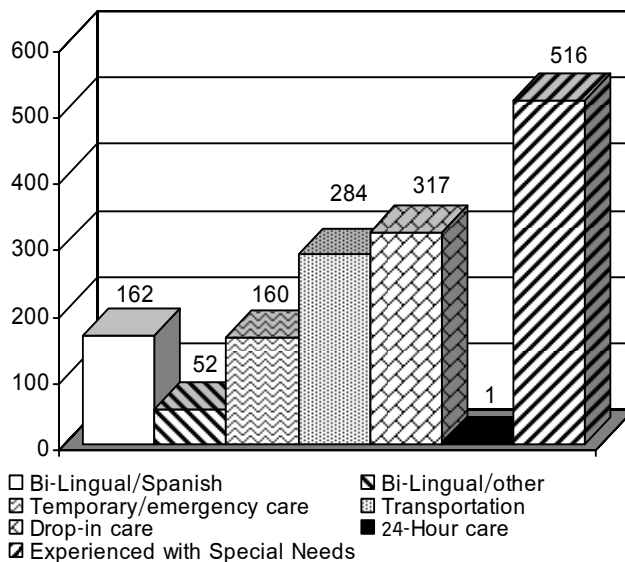
Years in Operation - Licensed Facilities



796 Licensed Child Care Centers & Family Child Care Homes reporting

Source: Child Care Resources Inc.'s database as of December 31, 2008

Special Services Offered by Licensed Facilities



796 Licensed Child Care Centers & Family Child Care Homes reporting

Source: Child Care Resources Inc.'s database as of December 31, 2008

Licensed and Legally Exempt Family Child Care Homes by Zip Code

Zip Code	Programs	Capacity	Zip Code	Programs	Capacity	Zip Code	Programs	Capacity
28078	5	34	28211	1	5	28262	4	26
28105	6	39	28212	19	125	28269	34	221
28202	2	13	28213	19	140	28270	1	5
28204	1	5	28214	15	99	28273	20	129
28205	14	91	28215	44	334	28277	2	16
28206	5	37	28216	27	177	28278	7	44
28208	24	174	28217	23	157			
28209	1	5	28226	2	13			
28210	5	34	28227	15	99			

Licensed and Legally Exempt Child Care Centers by Zip Code*

Zip Code	Programs	Capacity	Zip Code	Programs	Capacity	Zip Code	Programs	Capacity
28031	8	860	28208	56	3,002	28226	12	1,614
28036	2	145	28209	12	1,241	28227	19	1,584
28078	17	2,411	28210	18	1,699	28256	1	170
28105	16	2,261	28211	12	1,186	28262	21	3,090
28134	7	755	28212	18	1,115	28269	22	2,297
28202	8	1,103	28213	31	2,587	28270	9	1,090
28203	8	719	28214	15	1,367	28273	9	1,272
28204	7	567	28215	37	2,117	28277	21	3,133
28205	47	3,458	28216	35	2,003	28278	2	112
28206	17	1,075	28217	26	1,663			
28207	4	439	28221	1	60			

Private Part-Day Preschool Only Programs by Zip Code

Zip Code	Programs	Capacity	Zip Code	Programs	Capacity	Zip Code	Programs	Capacity
28031	3	263	28207	5	1,036	28227	5	395
28036	2	161	28208	1	20	28262	3	254
28078	3	190	28209	1	94	28269	1	286
28105	6	1,156	28210	3	366	28270	3	485
28134	1	54	28211	4	676	28272	1	30
28202	2	305	28212	2	121	28273	2	179
28203	1	54	28213	1	130	27277	1	138
28204	3	230	28215	3	323	28278	2	131
28205	4	242	28216	4	293			
28206	1	14	28226	6	602			

Publicly Sponsored Pre-K Programs by Zip Code **

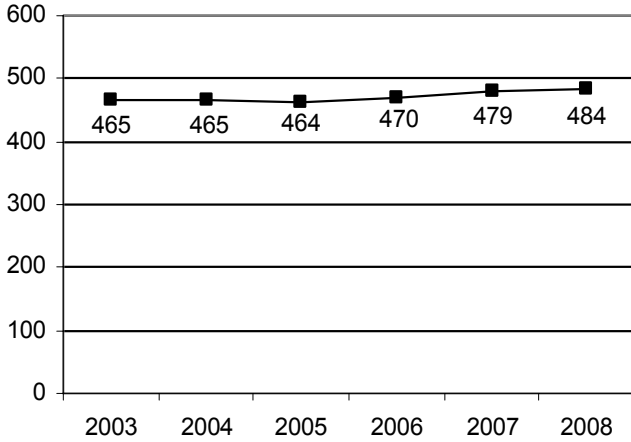
Zip Code	Programs	Capacity	Zip Code	Programs	Capacity	Zip Code	Programs	Capacity
28031	1	49	28208	3	447	28262	1	114
28078	1	49	28209	2	198	28269	1	149
28203	2	183	28210	1	604			
28204	1	72	28211	2	76			
28205	6	678	28212	2	163			
28206	4	901	28215	2	292			
28207	1	10	28227	1	38			

*More at Four children enrolled in Child Care Centers in the community are counted within licensed and legally exempt Child Care Centers.

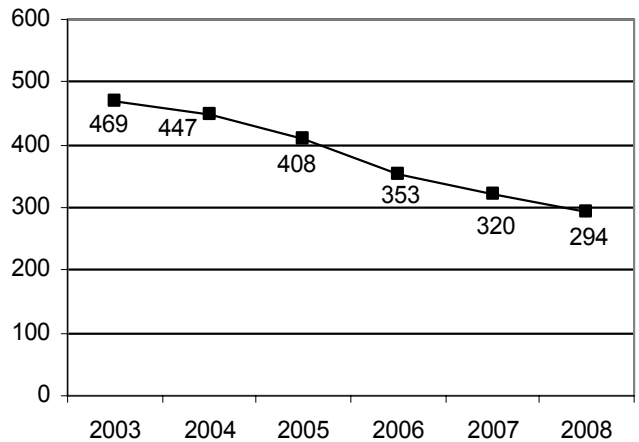
**CMS Bright Beginnings (including those with enrolled Head Start and More at Four children, Exceptional Children and Montessori classes) and Head Start community sites are included with publicly sponsored Pre-K programs.

Child Care Program Supply Trends Child Care Centers and Family Child Care Homes

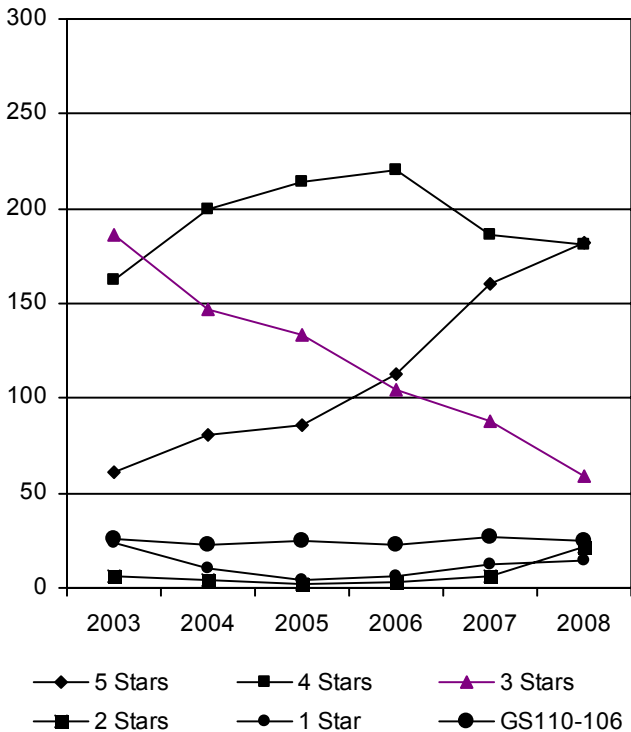
Licensed Child Care Centers 2003-2008



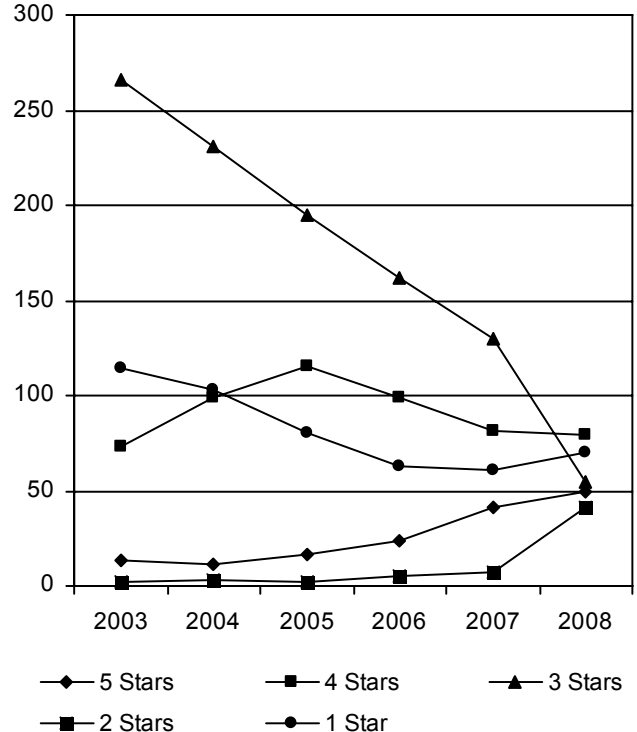
Licensed Family Child Care Homes 2003-2008



Star Rated License Trends for Child Care Centers 2003-2008



Star Rated License Trends for Family Child Care Homes 2003-2008



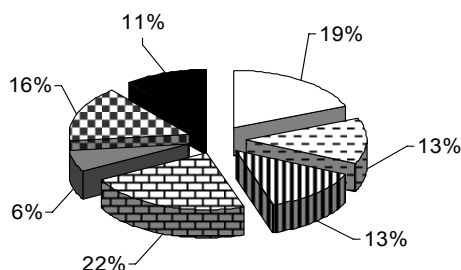
Note: Numbers include star rated and GS110-106 programs only.

Source: Child Care Resources Inc.'s database, December 31, 2008

Child Care Demand N = Number

Ages of Children Served

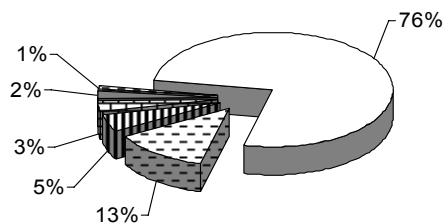
N = 4,702 Children



- Pre-natal/under one (19%)
- Two (13%)
- Five (6%)
- Nine and over (11%)
- One (13%)
- Three/Four (22%)
- Six to Eight (16%)

Location Preference

N = 4,702 Children

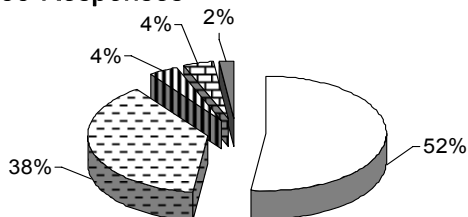


- Near home (76%)
- Near employer/home (5%)
- Near employment (2%)
- Near school (13%)
- Zip Code (3%)
- Other (1%)

Note: Families can choose more than one location.

Type of Care Preferred

N = 8,335 Responses

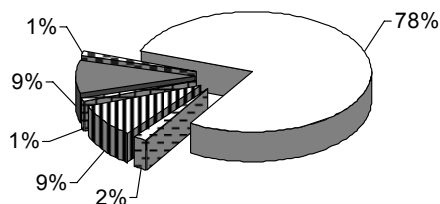


- Child Care Center (52%)
- Summer Camp (4%)
- Part-Day Preschool (2%)
- Family Child Care Home (38%)
- School Age Program (4%)

Note: Families can choose more than one option for care; therefore.

Primary Reason Child Care Needed

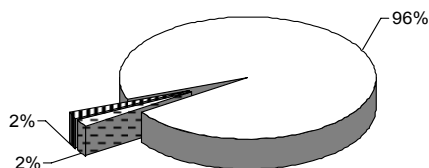
N = 4,702 Children



- Employment (78%)
- Parent attending school/training (9%)
- Parent seeking employment (9%)
- Relocation (2%)
- Child socialization (1%)
- Other (1%)

Calls for Child Care Referrals

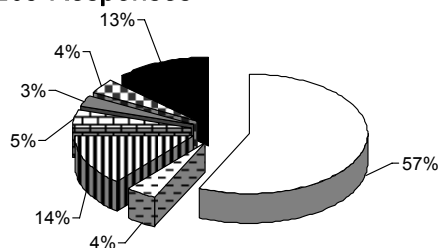
N = 4,702 Children



- Mecklenburg County (96%)
- Other NC counties (2%)
- Out of state (2%)

Reasons Parents Did Not Find Child Care

N = 1,205 Responses



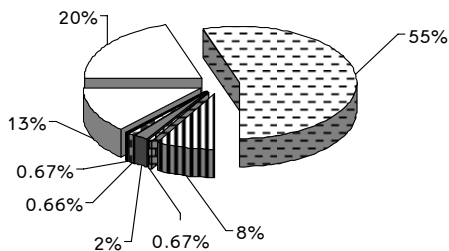
- Cost (57%)
- Preferred care not available (14%)
- Facility's schedule (3%)
- Waiting for financial assistance (13%)
- Location (4%)
- Hours of operation (5%)
- Other (4%)

Note: Numbers are based on a 26% sample of families searching for care; parents can give more than one response. Numbers have been extrapolated to the whole.

Child Care Demand (continued) N = Number

License Status of Programs Where Families Found Child Care

N = 1,422 Responses



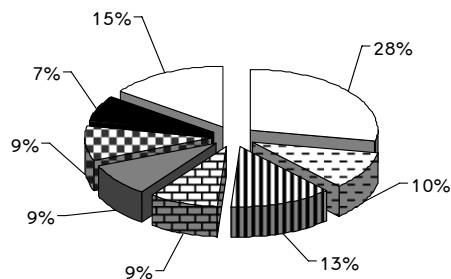
- 5 Star (20%)
- ▨ 3 Star (8%)
- 1 Star (2%)
- Temporary (.67%)
- ▨ 4 Star (55%)
- ▨ 2 Star (.67%)
- ▨ GS 110-106 (.66%)
- License Exempt (13%)

Note: Numbers are based on a 26% sample of families searching for care. Numbers have been extrapolated to the whole.

Source: Child Care Resources Inc.'s database January 1, 2008 – December 31, 2008

Quality Indicators Parents Used When Searching for Child Care

N = 3,089 Responses



- Star rating (28%)
- ▨ Staff/child interaction (13%)
- Education of staff (9%)
- Staff stability (lack of turnover) (7%)
- ▨ Low staff/child ration (10%)
- ▨ Small group size (9%)
- ▨ Compliance history (9%)
- Age appropriate activities (15%)

Note: Families can choose more than one quality indicator. Numbers based on a 26% sample of families searching for care. Families can choose more than one option; therefore, percentages may total more than 100%. Numbers have been extrapolated to the whole.

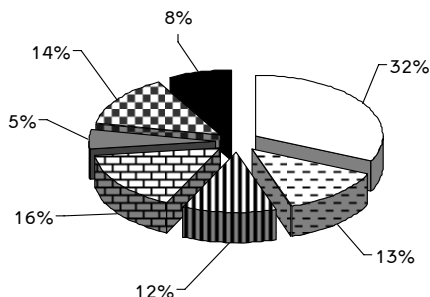
Source: Child Care Resources Inc.'s database January 1, 2008 – December 31, 2008

Child Care Subsidy

Child Care Financial Assistance

Total number of calls received by *Child Care Search* from parents/caregivers needing subsidized child care: 2,468

Ages of Children Whose Parents Called Seeking Child Care Financial Assistance N = 3,777



- Prenatal/under age One (32%)
- ▨ Two (12%)
- Five (5%)
- Nine and over (8%)
- ▨ One (13%)
- ▨ Three/Four (16%)
- ▨ Six to eight (14%)

Note: Children of parents seeking child care referrals in addition to subsidy are included with child care demand data.

Note: Percentage totals are rounded to 100%

Source: Child Care Resources Inc.'s database (January 1, 2008 – December 31, 2008)

Number of Children Receiving Subsidized Care

Number of children receiving subsidized care as of December 31, 2008	8,683
Monthly average of children receiving subsidy from Jan. 1, 2008 – Dec. 31, 2008	8,485
Average monthly waiting list from January 1, 2008 – December 31, 2008	6,631
Waiting list for subsidized care as of December 31, 2008	6,112

Source: North Carolina Division of Child Development, January 1, 2008 – December 31, 2008

Maximum Income Eligibility for Child Care Subsidies 8/01/2007

Family Size	1	2	3	4	5	6
Maximum Gross Monthly/Annual Income	\$1,892/ \$22,704	\$2,475/ \$29,700	\$3,057/ \$36,684	\$3,639/ \$43,668	\$4,221/ \$50,652	\$4,804/ \$57,648
Family Size	7	8	9	10	11	12
Maximum Gross Monthly/Annual Income	\$4,913/ \$58,956	\$5,022/ \$60,264	\$5,131/ \$61,572	\$5,240/ \$62,880	\$5,350/ \$64,200	\$5,459/ \$65,508

Co-payments (% of gross monthly income):
1-3 children - 10% / 4-5 children - 9% / 6-12 children - 8%

Source: North Carolina Division of Child Development

MECKLENBURG COUNTY FACTS

Projected Total Population

	2006	2007	2008
Population	831,237	862,835	892,606

Source: Demographic and Economic Analysis Section, NC Office of State Budget and Management, estimates and projections revised as of June 3, 2008; most recent data available.

Seasonally Unadjusted Unemployment Rate

	2006	2007	2008
Rate	5.1	4.7	8.3

Source: North Carolina Employment Security Commission, December 2006, 2007 and 2008. 2006 and 2007 figures have been revised by ESC.

Mecklenburg County is:

- 2nd largest financial center in the U.S. behind New York City
- 6th largest in number of Fortune 500 Headquarters
- 6th largest urban region in U.S. (100 mile radius - 6.9 million people)
- 10th most active airport in the U.S.
- 20th largest city in the U.S. (Charlotte)

Source: Charlotte Chamber of Commerce 2008

Median Household Income and Living Income Standard

	2005	2006	2007
*Median household income	50,215	51,945	55,890
**Living Income Standard	43,680	N/A	41,750

Note: The Living Income Standard is the income needed for a family of one parent, one infant and one preschool child.

*Source: 2005, 2006 and 2007 American Community Survey

**Source: NC Justice and Community Development Center 2005 and 2008 (based on 2007).

Child Abuse and Neglect (CAN) Data

	CAN reports for all ages (0-17)	Children found substantiated or in need of services
Ages 0-6	5,327	1,197
Ages 7-12	3,568	560
Ages 13-17	2,631	439
Age unknown	36	7
Total	11,562	2,203

Source: NC DHSS Central Registry, referrals made in FY2008

General Information

The federal poverty guidelines are determined according to family size and apply to all but two states.* These guidelines, issued each year by the Department of Health and Human Services (HHS), are a form of measurement that simplifies the poverty thresholds for administrative purposes, such as determining financial eligibility for certain programs. Listed below are the 2008 HHS guidelines.

- | | |
|------------------------------|----------------------------|
| Single individual = \$10,400 | Family of five = \$24,800 |
| Family of two = \$14,000 | Family of six = \$28,400 |
| Family of three = \$17,600 | Family of seven = \$32,000 |
| Family of four = \$21,200 | Family of eight = \$35,600 |

For each additional person, add \$3,600

*Alaska and Hawaii use different guidelines due to higher living expenses

Source: Federal Register, Vol. 73, No. 15, January 23, 2008, pp 3971-3972

TANF Recipients

	2006	2007	2008
0-5 years	2,268	1,889	2,393
0-17 years	5,123	4,325	4,796

Source: North Carolina Eligibility Information System, July 1, 2006, 2007 and 2008

Food Stamp Recipients

	2006	2007	2008
0-5 years	12,233	12,971	14,311
0-17 years	31,665	34,268	37,306

Source: North Carolina Eligibility Information System, July 1, 2006, 2007 and 2008

Charlotte-Mecklenburg School System

	Schools	Capacity
*Pre-K Sites in Schools	24	3,549
Elementary Schools	99	66,745
Middle Schools	31	29,517
High Schools	33	37,798
Magnet Schools	40	**
Schools with Special Programs	4	**

*Includes five (5) Pre-K only sites, sixteen (16) housed in CMS elementary schools and three (3) Montessori sites

**Included above

Source: Charlotte Mecklenburg Schools 2008-2009

Licensed Child Care Programs

	2006	2007	2008
Children Enrolled (0-12)	29,609	29,454	29,057
Child Care Slots	51,019	51,375	52,688
Programs	867	828	801
Staff Employed	5,198	4,903	4,992

Note: Includes licensed part-day preschool programs

Source: North Carolina Division of Child Development, December 31, 2006, 2007 and 2008

Definitions

Center-Based Programs are independently operated or operate in schools, workplaces, individual homes (considered small centers), churches or synagogues. Most are open on a fixed schedule, eight or more hours per day, Monday through Friday. Children in centers are usually grouped by age. As they grow, children often move into the next age group with a different caregiver. All centers must meet state regulations for the legal operation of a child care facility.

Child Care Subsidy — Financial assistance for income eligible families to secure North Carolina Division of Child Development licensed child care while parents/guardians are working, attending school or job training activities.

Exceptional Children's Programs are public pre-kindergarten programs that assure that children with varying abilities have the opportunity to develop mentally, physically and emotionally when provided with an appropriate individualized education in the least restrictive environment with their typically developing peers. The program serves children ages three, four and those five year olds not age eligible for kindergarten. Parents have the opportunity to be actively involved in meaningful ways in their child's education. (Based on IDEA – P.L. 94-142)

GS 110-106 (Religious-sponsored child care facilities) are child care facilities or summer day camps operated by a church, synagogue or school of religious charter. While exempt from licensure, they must file a notice of intent to operate as a child care facility with the state. A religious-sponsored child care facility may choose to seek licensure, but if it does not, it must still meet state licensing requirements with the following exceptions: staff qualifications, staff training, written activity plans and developmentally appropriate activity centers.

Head Start and Early Head Start are federally-funded programs that provide free, comprehensive developmental services for children ages birth to five from low-income eligible families. These programs are child-focused and family centered.

Licensure — Legal permission, granted by the North Carolina Division of Child Development, to operate a child care facility for more than two children for more than four hours a day. A license is issued according to the rules and regulations set forth by federal and state laws or local ordinances pertaining to a child's health, safety and welfare.

Licensed Family Child Care Homes (FCCH) are operated by individuals who provide care in their homes for more than two children who are not related to them. These programs offer a home-like setting that provide the opportunity for siblings to stay together. A licensed FCCH may care for up to eight children, with no more than five preschool children in care at any given time. The caregiver's own preschool-age children must be included in the number of preschoolers. However, their school-age children are not counted for licensing purposes. FCCH's must provide age-appropriate toys and activities, nutritious meals and snacks and meet basic health and safety standards. All FCCH's must meet licensing regulations for the legal operation of a child care facility.

Legally Exempt Family Child Care Homes are allowed to care for two non-related children in addition to their own without being licensed by the state.

Montessori Curriculum is an individualized program of education based on the philosophy that children learn through their own experiences in a carefully prepared, ordered and responsive environment. Included in the environment are didactic and sequenced materials geared toward promoting children's education in four areas: development of the senses, conceptual or academic development, competence in practical life activities and character development.

More at Four is a statewide, voluntary program that prepares eligible four-year-old children for school success by providing them with high quality pre-kindergarten experiences. The curricula used are child-centered, have a literacy and language focus and include parent participation. More at Four classrooms operate in centers and school settings for six hours per day, follow the public school calendar and have no more than a one-to-nine staff-to-child ratio.

NAA Accreditation — Accreditation standards for programs offering care to school-age children. The standards were developed by the National AfterSchool Association (NAA), a professional support network promoting quality programs for children and youth in their out-of-school time. NAA accredits programs that meet these quality standards, based on a self-study and a NAA Endorser's ratings of compliance with the standards.

Definitions (Cont'd.)

NAEYC Accreditation — Accreditation standards for early education programs (full-day and part-day). The National Association for the Education of Young Children (NAEYC) has developed a set of quality standards that programs must meet to receive accreditation. Receipt of accreditation indicates that an early education program provides a high quality learning environment for children that exceeds the threshold for quality set by licensing requirements. Programs must complete a self study, submit an application, and have ratings verified by an NAEYC Validator.

School-Age Child Care refers to programs for children before and/or after school hours and during school holidays and vacations. Family child care homes, child care centers and schools typically offer this type of care. Programs that operate for four hours or less per day are license-exempt, but may voluntarily seek state licensure or pursue national accreditation.

Part-Day Preschools operate for four hours or less per day serving children between the ages of birth-five years. License-exempt part-day preschools may voluntarily seek licensure and may pursue national accreditation. Typically, part-day programs operate on the same calendar year as the public school system, serving families where one parent is not employed full-time. Faith organizations and community-based not-for-profit organizations are the primary sponsors of part-day programs.

Public Pre-Kindergarten Programs include center-based classrooms for four-year olds that are fully or partially publicly funded and operate under the direction of state, local and federal education and human service agencies.

Probationary License — A facility may be placed on probationary status when NCDCCD determines that violations of child care requirements have been willful, continual or hazardous to the health or safety of children. This status shall not exceed one year.

Provisional License may be issued for up to 12 months when NCDCCD determines that an operator is making a reasonable effort to comply fully and maintain compliance with all licensing requirements, to give the operator an opportunity to correct violations regarding building, fire and sanitation requirements and/or when child abuse or neglect occurred in a child care facility.

Star Rated License — Programs that apply for a 2- to 5-star license will be assessed under a two-component system that uses 1) Program Standards and 2) Staff Education to determine the license points for the star rating. In addition, all child care programs, regardless of the type of license they have, will also be required to maintain a 75% Compliance History. An additional “quality point” may be earned by child care programs to meet additional education or programmatic criteria not addressed under the Program Standards or Staff Education components..

Summer Day Camps are generally designed for school-age children and operate during the day for less than four months. They may be offered by child care centers, colleges, recreation sites, faith-based groups or other sponsoring organizations. This type of program is exempt from state licensure.

Temporary License is given by the North Carolina Division of Child Development for a period of six months to a new program or to a previously licensed program (when a change in ownership or location occurs) after which it may apply for a higher than one star rating.

**For more information
call (704) 376-6697**



child care
resources
inc.

Mecklenburg County / Main Offices

4601 Park Road, Suite 500
Charlotte, NC 28209
(704) 376-6697

Cabarrus County Office

2353 Concord Lake Road, Suite 160
Concord, NC 28025
(704) 786-1023

Union County Office

105-A Cedar Street
Monroe, NC 28110
(704) 238-8810

email: mailbox@childcareresourcesinc.org
www.childcareresourcesinc.org

© 2006, *Child Care Resources Inc.*



United Way
of Central Carolinas



North Carolina Division
of Child Development