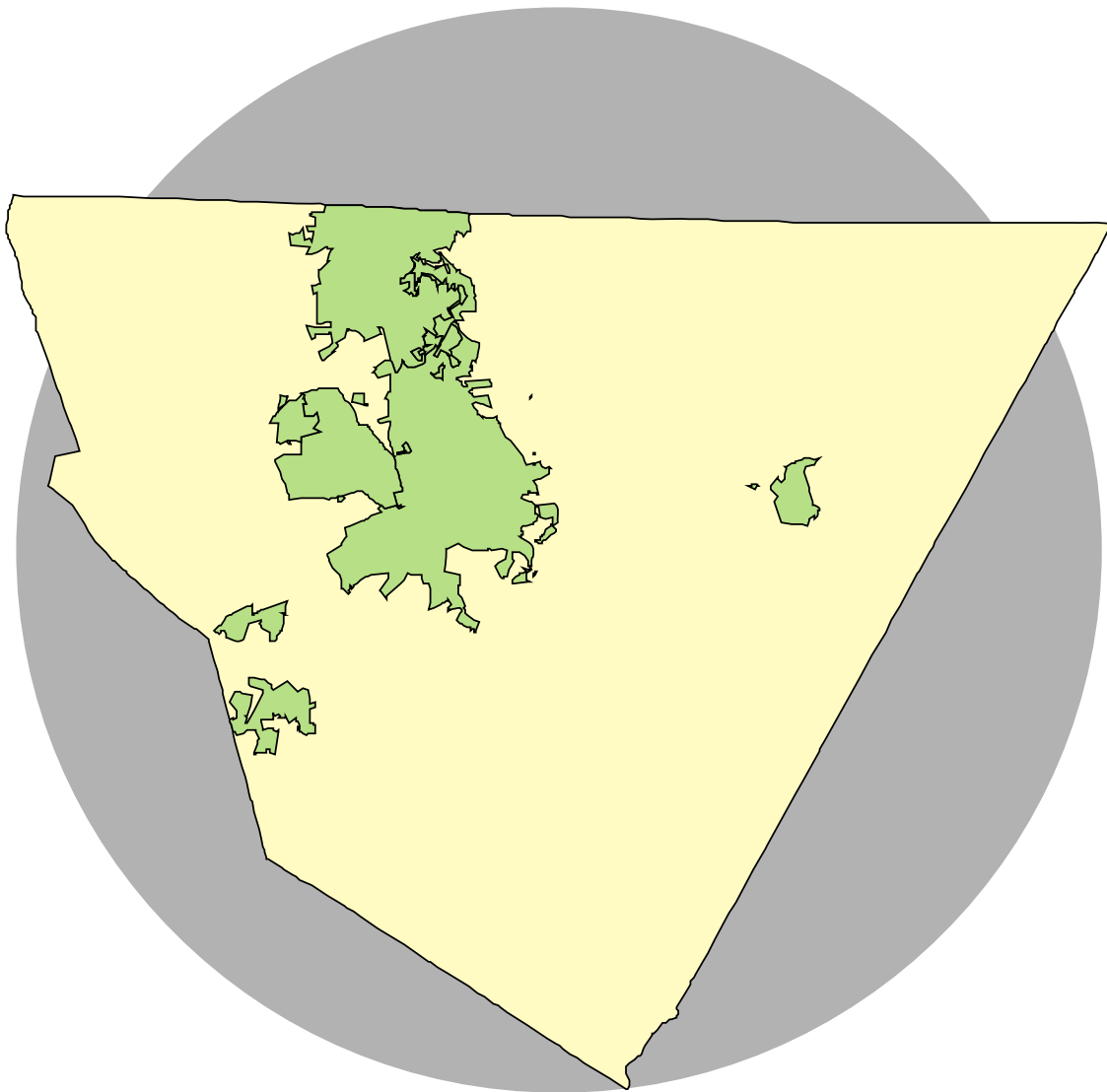




Early Care & Education Demographics Report

.....
Cabarrus County as of June 30, 2009





Contents

.....

Early Care & Education Demographics Report

Cabarrus County as of June 30, 2009

Population Statistics..... Page 1

Cabarrus County At a Glance..... Page 2

Early Education Demographics..... Page 3

Early Education Programs by Age of Children Served..... Page 5

Licensed Child Care Program Features..... Page 6

Child Care Program Supply Trends..... Page 8

Child Care Demand..... Page 9

Child Care Subsidy Information..... Page 10

About Cabarrus County..... Page 11

Definitions..... Page 12

Statistics in this report are based on information gathered from Child Care Resources Inc.'s comprehensive database of family child care homes, child care centers, part-day preschools, Head Start programs and public pre-kindergartens.

To ensure accuracy of the data, Child Care Resources Inc. annually surveys all early care and education programs in Cabarrus County in regard to their programs (licensing, capacity, curriculum, hours of operation, fees, etc.). The database is also updated weekly based on licensing information provided by the North Carolina Division of Child Development and provider reports. Daily updates are made to reflect changes in status or programming throughout the year. Statistics regarding population and income, which are gathered from various sources, are the most current available.

Child Care Resources Inc. publishes and distributes this report semi-annually. For more information regarding this report or about early care and education or school-age programs in Mecklenburg, Cabarrus or Union County, contact *Child Care Search* at 704-348-2181.



Child Care Resources Inc. Cabarrus County Early Education Demographics Report

CABARRUS COUNTY POPULATION STATISTICS

Total Population

	2007	2008	2009
Mecklenburg County	862,835	892,606	894,219
Cabarrus County	164,379	170,509	177,007
Union County	182,380	192,452	200,606
North Carolina	9,069,370	9,240,289	9,398,080

Source: Demographic and Economic Analysis Section, NC Office of State Budget and Management; estimates and projections for July 1, 2009, revised April 23, 2009

All Women with Related Children Under 18 Years

	2005	2007
Number of women	19,542	20,623

Source: 2005 and 2007 American Community Survey (tables B11004, sum of figures for families: Married couple family; With children under 16 years and other family; Female householder, no husband present; With related children under 18 years)

Women Ages 20-64 in the Labor Force

	2005	2007
With own children under age 6 only*	3,137	3,800
With own children under age 6 and ages 6-18*	3,833	2,271
With own children ages 6-18 only*	7,383	7,796
Single living in poverty w/children <5**	380	709

*Numbers reflect employed women only

Source: 2005 and 2007 American Community Survey, tables B23003* and B17010**

Households with Own Children Under Age 6*

	2000	2005	2007
Lives with two parents (both working)	4,575	6,383	6,812
Lives with father only (working)	585	1,321	1,457
Lives with mother only (working)	1,375	1,323	2,646
Lives with two parents (one working)	3,518	3,329	3,467
Not in labor force	654	690	418
Total Households	10,707	13,046	14,800

*By Family Configuration and Employment Status

Source: 2000, 2005 and 2007 American Community Survey, table B23008

Families and Poverty (with related children)

	2000	2005	2007
All families	36,732	40,013	42,990
Families living below poverty level*	1,771	2,873	4,061
All families w/children < 5	8,352	8,610	8,989
All w/children < 5 below poverty level*	834	1,267	1,408
All families w/children under 18	18,888	21,036	22,245
All w/children < 18 below poverty level*	1,389	2,312	2,896

* 2000 data based on 1999 income data

Source: 2000, 2005 and 2007 American Community Survey, table B17010

Note: Each year the US Department of Health and Human Services (HHS) publishes Federal Poverty Guidelines as noted on page 11 of this report.

Child Population

	2007	2008	2009
0-2 years	7,739	8,078	7,906
3-4 years	5,141	5,333	4,836
5 years	2,647	2,654	2,363
6-13 years	18,932	19,876	19,274
Total	34,459	35,941	34,379

Source: Demographic and Economic Analysis Section, NC Office of State Budget and Management; estimates and projections for July 1, 2009, revised April 23, 2009

Pregnancies and Births - Ages 15-19

	2000	2005	2007
Live Births	300	206	265
Birth Rate*	73.6	44.4	48.5
Pregnancies	355	273	344
Pregnancy Rate*	87.1	54.8	63.0

*per 1,000

Source: State Center for Health Statistics, 2000, 2005 and 2007, most recent data available

Pregnancies and Births - Ages 15-44

	2000	2005	2007
Live Births	2,136	2,389	2,610
Birth Rate*	73.9	74.4	75.8
Pregnancies	2,460	2,790	3,011
Pregnancy Rate*	85.1	86.9	87.4

*per 1,000

Source: State Center for Health Statistics, 2000, 2005 and 2007, most recent data available

Income Ranges for Cabarrus County Households

	2000	2005	2007
< \$10,000	3,292	3,133	3,968
\$10,000-\$14,999	2,572	3,649	4,401
\$15,000-\$24,999	5,857	6,061	6,516
\$25,000-\$34,999	6,318	7,698	7,434
\$35,000-\$49,999	8,734	7,965	7,813
\$50,000-\$74,999	11,783	13,099	13,309
\$75,000+	11,028	15,404	18,012
Total Households	49,584	57,009	61,453

Source: 2000, 2005 and 2007 American Community Survey, table B19001

Children and Poverty

	2000	2005	2007
All children < 18	33,782	38,991	43,539
All < 18 below poverty level*	2,893	4,917	7,383
All children < 5	9,283	11,337	12,921
All < 5 below poverty level*	1,063	1,462	2,446
All children 5 to 18	24,499	27,654	30,618
All 5 to 18 below poverty level*	1,830	4,917	4,937

* 2000 data based on 1999 income data

Source: 2000, 2005 and 2007 American Community Survey, table B17001

Note: Each year the US Department of Health and Human Services (HHS) publishes Federal Poverty Guidelines as noted on page 11 of this report.



Child Care Resources Inc.

Cabarrus County Early Education Demographics Report

CABARRUS COUNTY AT A GLANCE

Child Care Demand

Child Population vs Child Population w/ Working Parents

Age	Child Population in Family Households		Children with Working Parents - all parents in home employed		Children Receiving Child Care Subsidy	
	Number	%	Number	%	Number	%
0-6	14,430	35%	10,915	76%	966	9%
6-18	27,088	65%	20,784	77%	235	1%
Total	41,518	100%	31,699	76%	1,201	4%

Source: 2007 American Community Survey (table B09001) and Child Care Resources Inc. (6/30/2009)

Child Care Quality

Star Ratings of Licensed Child Care Programs (Child Care Centers and Family Child Care Homes)

Star Rating	Number	Percent of Star Rated Programs (92)	Percent of Total Licensed Programs (105)
1	13	14%	12%
2	13	14%	12%
3	12	13%	11%
4	25	27%	24%
5	29	32%	28%
Total	92	100%	88%

Source: Child Care Resources Inc. (6/30/2009)

Cabarrus County Licensed Child Care Programs Two Component Star Rated License System and Program Quality

Licensing Points in Program

Points	Child Care Centers			Family Child Care Homes		
	3-stars	4-stars	5-stars	3-stars	4-stars	5-stars
1 point						
2 points	3			5	2	
3 points	2					
4 points		2				
5 points	2	4			1	
6 points		11	5		2	
7 points		1	21		2	3
Total	7	18	26	5	7	3

Licensing Points in Education

	Child Care Centers			Family Child Care Homes		
	3-stars	4-stars	5-stars	3-stars	4-stars	5-stars
1						
1						
		3			3	
3	7			3	1	
2	7	13		1	3	
	1	5		2		
		8		2		
7	18	26	5	7	3	

Notes: Research demonstrates that programs with better educated staff and higher program standards have better child outcomes. The above chart represents programs and their corresponding points. Programs are awarded a license based on the total number of points in staff education, program standards and additionally they may elect to seek a quality point: 4-6 points = 2 stars; 7-9 points = 3 stars; 10-12 points = 4 stars; and 13-15 points = 5 stars. Of the sixty-six (66) programs above, 65(99%) have earned the additional quality point.

Source: Child Care Resources Inc. (6/30/2009)

Availability

Licensed Child Care Programs

Type of Care	Number of Programs	Total Capacity	Percentage of Programs Accepting Subsidy
Star Rated CCCs*	55	6,609	87%
Temporary CCCs*	3	110	0%
Provisional/Probationary CCCs*	0	0	0%
GS 110-106	10	1,139	60%
Star Rated FCCHs *	37	287	63%
Part Day Preschools (private)	14	1,048	N/A
Head Start **	2	313	N/A
Public Pre-K Programs***	5	386	N/A

*CCC = Child Care Centers; FCCH = Family Child Care Homes

**Includes 137 Cabarrus County children enrolled at McKnight Child Development Center in Rowan County.

***Includes Title One, More at Four and Exceptional Children Pre-K sites and capacity. In addition, three (3) sites are located in Kannapolis City Schools serving Cabarrus County children. Some of these slots are dual-funded with Head Start.

Note: Number of programs and capacity do not total.

Source: Child Care Resources Inc. (6/30/2009)

Affordability

Child Care Fees

Age of Children	CCCs** Average Full Time Weekly/Annual Fees		FCCHs *** Average Full Time Weekly/Annual Fees	
	Weekly	Annual	Weekly	Annual
Infants	\$166	\$8,632	\$136	\$7,072
Toddlers	\$159	\$8,268	\$133	\$6,916
Twos	\$148	\$7,696	\$130	\$6,760
Threes	\$141	\$7,332	\$125	\$6,500
Fours	\$141	\$7,332	\$120	\$6,240
S/A (PT)*	\$85	\$3,400	\$80	\$3,200
S/A (FT)*	\$131	\$1,572	\$120	\$1,440

*S/A = School-age; PT = Part-time (40 wks/yr); FT = Full-time - summers and holidays (12 wks/yr)

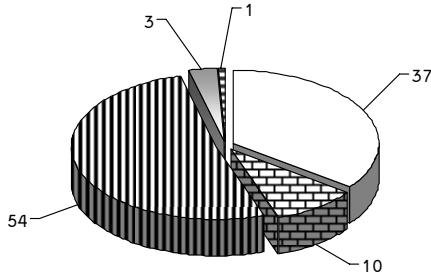
**CCC = Child Care Centers

***FCCH = Family Child Care Homes

Source: Child Care Resources Inc. (6/30/2009)

Early Education Demographics

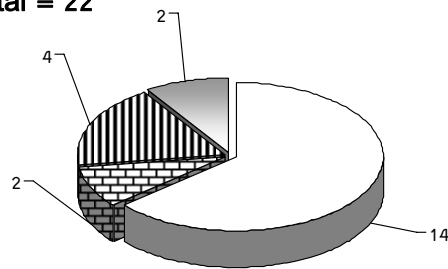
Licensed Early Childhood Programs Total = 105



- Star Rated Family Child Care Homes (37)
- ▨ Church Exempt (10)
- ▩ Star Rated Centers (2 Pre-K) (54)
- Temporary License (3)
- ▩ Star Rated Head Start Program (1)

Note: The North Carolina Division of Child Development separately licenses each building in which a regulated early education program operates; therefore, one program operating in two buildings will have two licenses.

Legally Exempt Early Childhood, School-Age Child Care and Summer Camp Programs Total = 22



- Private Part-Day Preschools (14)
- ▩ School-Age (2)
- ▩ Summer Camps (4)
- Public Pre-Kindergarten (2)

Note: Two (2) public pre-kindergarten sites have More at Four enrolled children and one (1) site has Exceptional Children enrolled.

Child Care Centers by Type of Licensure and Capacity

Licensed Child Care Centers with Star Ratings = 55				
License	Number of Programs	Percent of Programs	Number of Slots	Percent of Slots
1 Star	1	1.82%	195	2.95%
2 Stars	3	5.45%	214	3.24%
3 Stars	7	12.73%	479	7.25%
4 Stars	18	32.73%	2,356	35.65%
5 Stars	26	47.27%	3,365	50.92%
Subtotal*	55	100.00%	6,609	100.00%

Licensed Child Care Centers without Star Ratings = 13				
Licensure	Number of Programs	Percent of Programs	Number of Slots	Percent of Slots
Church Exempt	10	76.92%	1,139	91.19%
Temporary C	3	23.08%	110	8.81%
Provisional	0	0.00%	0	0.00%
Probationary	0	0.00%	0	0.00%
Subtotal*	13	100.00%	1,249	100.00%

Total	68		7,858	
--------------	-----------	--	--------------	--

* Percentage totals are rounded to 100%.

Family Child Care Homes by Type of Licensure and Capacity

Licensed Family Child Care Homes with Star Ratings = 37				
License	Number of Programs	Percent of Programs	Number of Slots	Percent of Slots
1 Star	12	32.43%	96	33.45%
2 Stars	10	27.03%	77	26.83%
3 Stars	5	13.51%	37	12.89%
4 Stars	7	18.92%	53	18.47%
5 Stars	3	8.11%	24	8.36%
Total*	37	100.00%	287	100.00%

* Percentage totals are rounded to 100%.

Private Part-Day Preschool Only Programs

- Number of Programs = 14 (legally exempt)
- Total Capacity = 1,048

Note: Based on desired capacity

CALLS FOR CHILD CARE REFERRALS

Child Care Search, a child care resource and referral service offered by Child Care Resources Inc. (CCRI), provides free consumer education, information and supportive counseling to Cabarrus County families to enable them to evaluate and make well-informed decisions about early care and education programs for their children. Families access the service by calling a publicly-listed Cabarrus County phone number or by visiting the Cabarrus County Department of Social Services. This service is funded by Child Care Resources Inc., NC Division of Child Development and the Cabarrus Partnership for Children.



Child Care Resources Inc.

Cabarrus County Early Education Demographics Report

Average Fees for Full-Time Child Care						
Age	Family Child Care Homes (FCCH) Weekly Fee	Average Annual FCCH Fee	Percent of annual income spent on child care for one child in a family of three in Cabarrus County*	Child Care Centers Weekly Fee	Average Annual Center Fee	Percent of annual income spent on child care for one child in a family of three in Cabarrus County*
Infant	\$136	\$7,072	17.47%	\$166	\$8,632	21.33%
Toddler	\$133	\$6,916	17.09%	\$159	\$8,268	20.43%
2 years old	\$130	\$6,760	16.70%	\$148	\$7,696	19.02%
3 years old	\$125	\$6,500	16.06%	\$141	\$7,332	18.12%
4 years old	\$120	\$6,240	15.42%	\$141	\$7,332	18.12%
School-age (part-time) 40 weeks of school year care	\$80	\$3,200	7.91%	\$85	\$3,400	8.40%
School-age (full-time) 12 weeks of care during summer/holidays	\$120	\$1,440	3.56%	\$131	\$1,572	3.80%

According to CCRI's provider database, the average annual fee for child care in Cabarrus County is:

Family child care for 0-5 year old children	\$6,698	*Based on annual income of \$40,470 (income needed for a family of one parent, one infant, and one preschool child as reported by the North Carolina Justice and Community Development Center 2008, based on 2007 data)
Center-based care for 0-5 year old children	\$7,852	
School-age care (year round in a FCCH)	\$4,640	
School-age care (year round in a Child Care Center)	\$4,972	Source: Child Care Resources Inc.'s database as of June 30, 2009

Average Fees for Star Licensed Child Care Centers Per Week*							
	Infant	Toddler	2 Year old	3 Year old	4 Year old	School-age (Full)	School-age (Part)
Average	\$171	\$166	\$152	\$144	\$144	\$134	\$87
1 Star	n/a	n/a	n/a	n/a	n/a	n/a	n/a
2 Stars	\$144	\$143	\$125	\$123	\$123	\$111	\$81
3 Stars	\$154	\$148	\$138	\$134	\$132	\$114	\$71
4 Stars	\$173	\$167	\$157	\$145	\$145	\$141	\$88
5 Stars	\$184	\$178	\$165	\$156	\$156	\$142	\$91

Data based on child care centers' and family child care homes' self-report to Child Care Resources Inc. of fees charged.
*Weighted averages

Average Fees for Star Licensed Family Child Care Homes Per Week*							
	Infant	Toddler	2 Year old	3 Year old	4 Year old	School-age (Full)	School-age (Part)
Average	\$136	\$133	\$130	\$126	\$125	\$120	\$80
1 Star	\$139	\$131	\$128	\$127	\$126	\$127	\$79
2 Stars	\$123	\$123	\$122	\$119	\$119	\$118	\$71
3 Stars	\$145	\$144	\$141	\$134	\$128	\$120	\$100
4 Stars	\$132	\$130	\$129	\$128	\$127	\$119	\$72
5 Stars	\$157	\$157	\$143	\$136	\$133	\$117	\$92

Source: Child Care Resources Inc.'s database as of June 30, 2009

Child Care Resources Inc. (CCRI) maintains a referral database of licensed and legally exempt early education programs in Cabarrus County. The North Carolina Division of Child Development (NCDCD) provides CCRI with basic information about licensed programs, which CCRI supplements with information gathered directly from program operators. Of the 105 NCDCD licensed early childhood and school-age programs in Cabarrus County, 90 (86%) have elected to provide CCRI with more program details than publicly available through the NCDCD. CCRI's database also includes information about 22 legally exempt (non-regulated) early education programs (e.g. part day preschool programs, summer camps and other school-age programs).



Early Education Programs by Age of Children Served

Licensed Family Child Care Homes

Ages Served	# of Programs Serving Those Age Groups	Ages Served	# of Programs Serving Those Age Groups
Infant (0-12 months)	34	Fives	37
Toddler (12-24 months)	36	School Age	34
Twos	37	Before & After School	26
Threes/Fours	37		

Family Child Care Homes reporting this information: 37
 Combined Capacity: 287 children

Licensed Child Care Centers

Ages Served	# of Programs Serving Those Age Groups	Ages Served	# of Programs Serving Those Age Groups
Infant (0-12 months)	40	Fives	65
Toddler (12-24 months)	40	School Age	58
Twos	43	Before & After School	50
Threes/Fours	48		

Child Care Centers reporting this information: 68
 Combined Capacity: 7,858 children

Private Part-Day Preschool Only Programs

Ages Served	# of Programs Serving Those Age Groups	Ages Served	# of Programs Serving Those Age Groups
Infant (0-12 months)	7	Threes/Fours	14
Toddler (12-24 months)	7	Fives	6
Twos	11		

Part-Day Preschool Programs reporting this information: 14
 Total Capacity: 1,048 children

Publicly Sponsored Pre-K Sites

Ages Served	# of Sites Serving Those Age Groups	# of Classrooms	Capacity
Head Start (3 and 4 year olds)	2	20	313*
Exceptional Children's Program (EC) (3 and 4 year olds)	3	inclusive	86**
More at Four (4 year olds)	14	34	466***

Publicly Sponsored Pre-K Sites reporting this information: 14 (includes 3 in Kannapolis City Schools serving Cabarrus County children)
 Total Capacity: 719

*There is a Head Start program located in Rowan County that serves Cabarrus County children who are included here.

**Exceptional Children are enrolled in classrooms with Head Start and More at Four children. These children are dual funded with More at Four children at three (3) Pre-K sites and are included with Head Start children at the Cabarrus Head Start site.

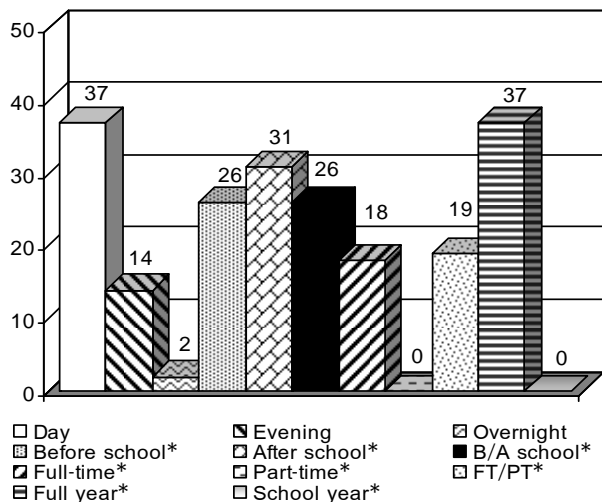
***This number includes children enrolled in Cabarrus County sites and Cabarrus County children enrolled in Kannapolis City School sites. There are 159 children in six (6) Cabarrus County community based sites; 307 children enrolled in eight (8) public Pre-K sites in Cabarrus County and . Kannapolis City Schools. At five (5) of these sites, More at Four children are dual funded with either Exceptional Children or Head Start children.

Note: Total number of sites, classrooms and capacities do not total.
 (Does not include summer camp programs.)

Source: Child Care Resources Inc.'s database of 121 programs supplying the above listed information as of June 30, 2009. These programs are able to serve a total of 9,453 children and are an unduplicated number of children and programs. (Includes 206 Cabarrus County children enrolled in Kannapolis City School sites)

Licensed Child Care Program Features

Family Child Care Home Schedules

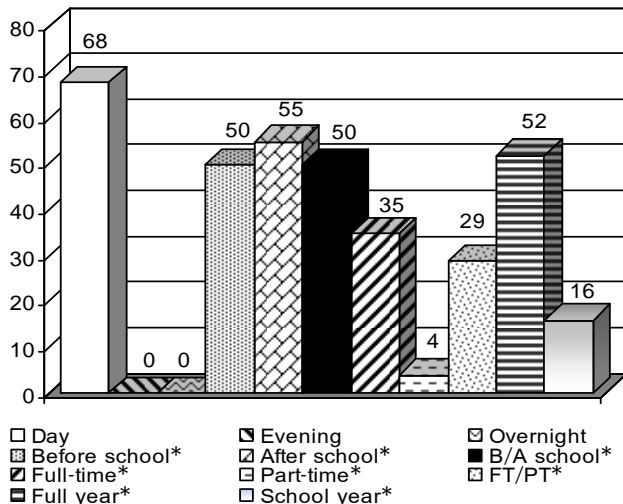


37 Licensed Family Child Care Homes reporting

*Based on day shift

Source: Child Care Resources Inc.'s database as of June 30, 2009

Child Care Center Schedules

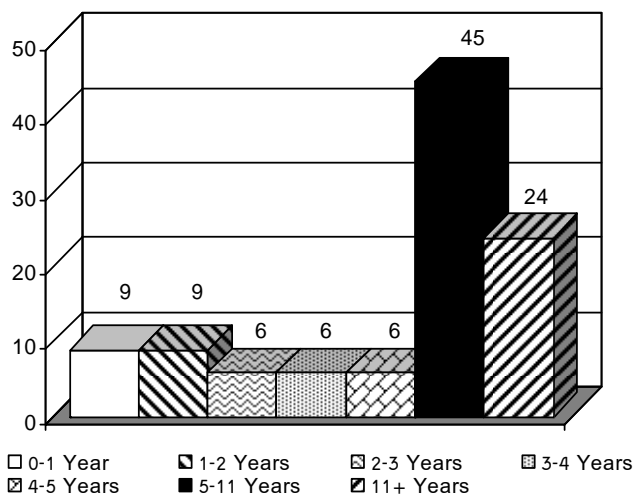


68 Licensed Child Care Centers reporting

*Based on day shift

Source: Child Care Resources Inc.'s database as of June 3, 2009

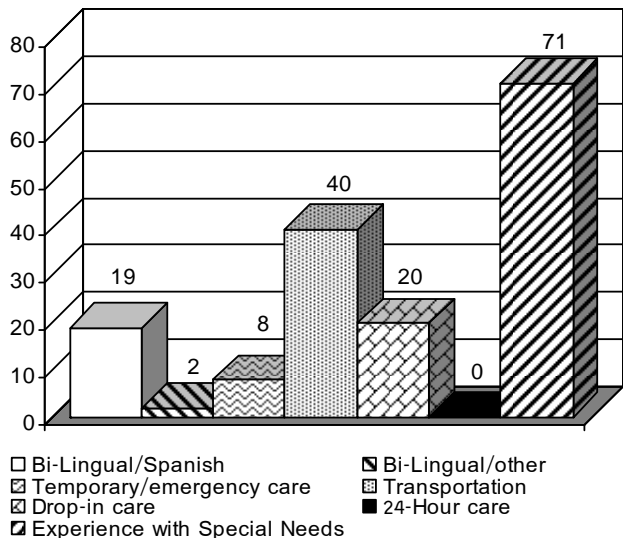
Years in Operation - Licensed Facilities



105 Licensed Child Care Centers & Family Child Care Homes reporting

Source: Child Care Resources Inc.'s database as of June 30, 2009

Special Services Offered by Licensed Facilities



105 Licensed Child Care Centers & Family Child Care Homes reporting

Source: Child Care Resources Inc.'s database as of June 30, 2009



Child Care Resources Inc.

Cabarrus County Early Education Demographics Report

Licensed and Legally Exempt Family Child Care Homes by Zip Code

Zip Code	Programs	Capacity	Zip Code	Programs	Capacity
28025	10	74	28081	7	56
28027	12	93	28083	5	40
28075	3	24			

Licensed and Legally Exempt Child Care Centers by Zip Code

Zip Code	Programs	Capacity	Zip Code	Programs	Capacity	Zip Code	Programs	Capacity
28025	18	1,739	28081	3	258	28124	1	75
28027	29	3,936	28083	9	741	28215**	1	172
28075	4	709	28107	2	178			

Private Part-Day Preschool Only Programs by Zip Code

Zip Code	Programs	Capacity	Zip Code	Programs	Capacity
28025	8	733	28081	1	40
28027	3	167	28083	1	58
28075	1	50			

Publicly Sponsored Pre-K Programs by Zip Code***

Zip Code	Programs	Capacity
28025	3	300
28027	2	54
28081	****	206

*More at Four classrooms in community are included with licensed and legally exempt centers.

**This program has a Mecklenburg County zip code but is located in Cabarrus County.

***Includes Head Start, Pre-K programs, Exceptional Children's Programs and More at Four children enrolled at sites at these locations.

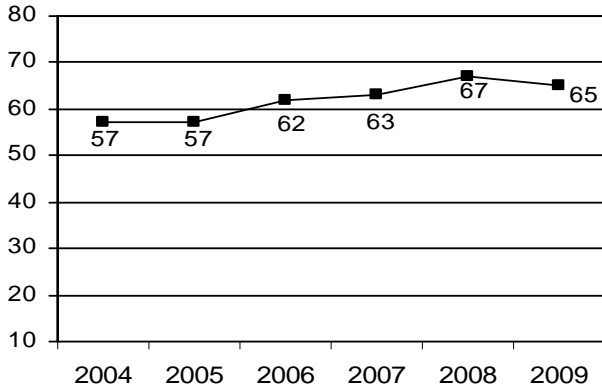
****Two Pre-K sites and one Head Start site are located in Kannapolis City Schools and serve Cabarrus County children.

Source: Child Care Resources Inc.'s database of 123 reporting programs with a total capacity of 9,703 as of June 30, 2009

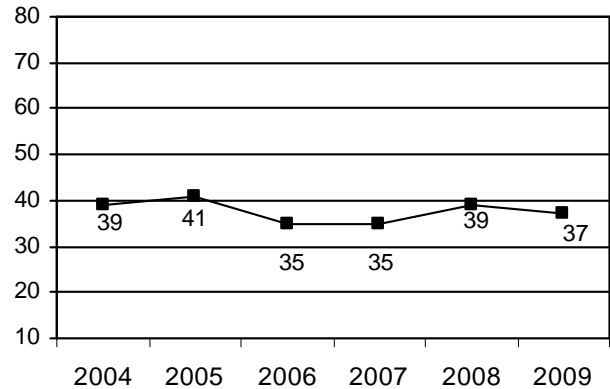
Child Care Program Supply Trends

Child Care Centers and Family Child Care Homes

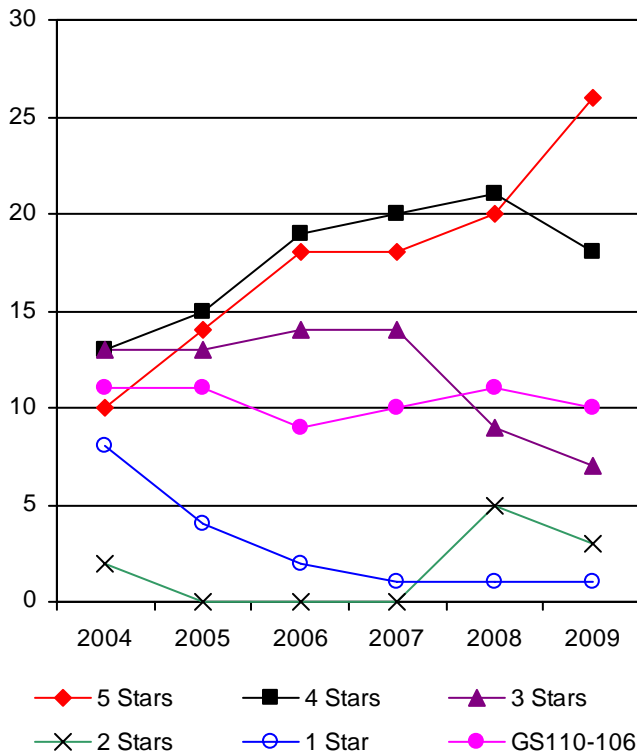
Licensed Child Care Centers 2004-2009



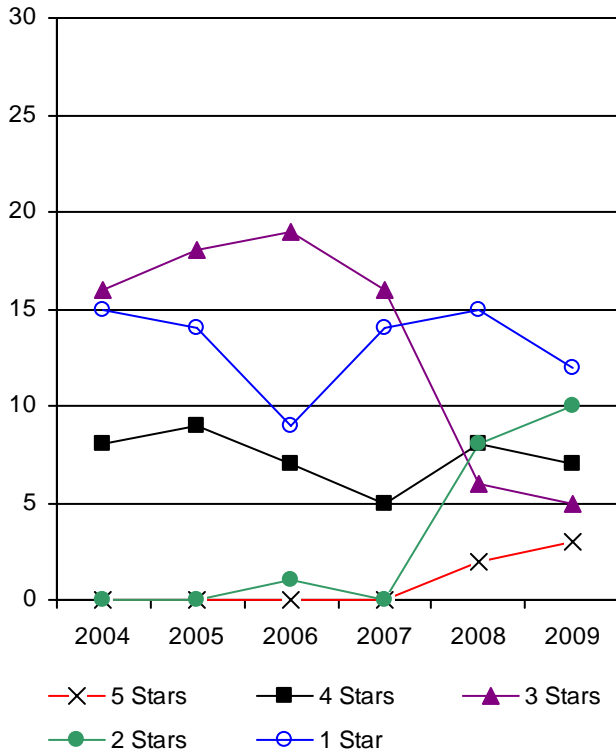
Licensed Family Child Care Homes 2004-2009



Star Rated License Trends for Child Care Centers 2004-2009



Star Rated License Trends for Family Child Care Homes 2004-2009



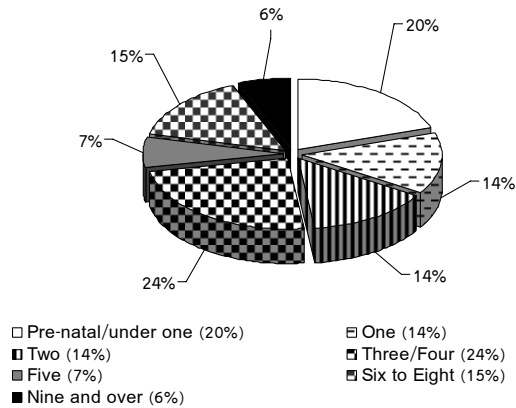
Note: Numbers include star rated and GS110-106 programs only

Source: Child Care Resources Inc.'s database June 30, 2009

Child Care Demand N = Number

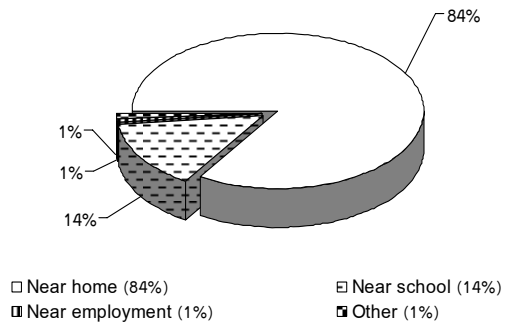
Ages of Children Served

N = 1,275 Children



Location Preference

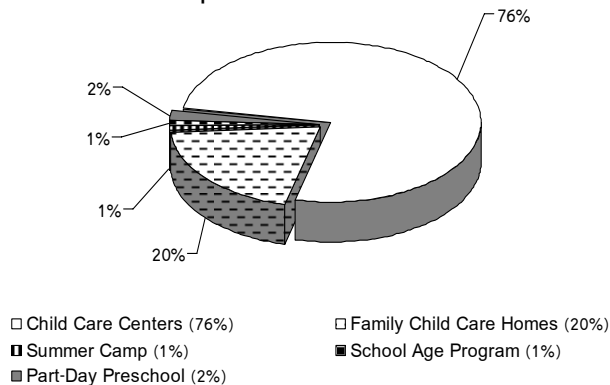
N = 1,275 Children



Note: Families can choose more than one location.

Type of Care Preferred

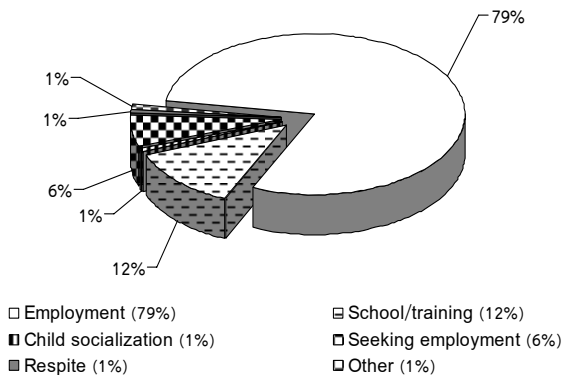
N = 1,563 Responses



Note: Families can choose more than one option for care.

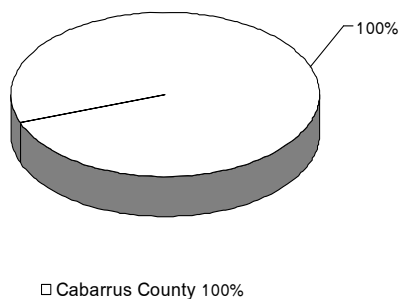
Primary Reason Child Care Needed

N = 1,275 Children



Calls for Child Care Referrals

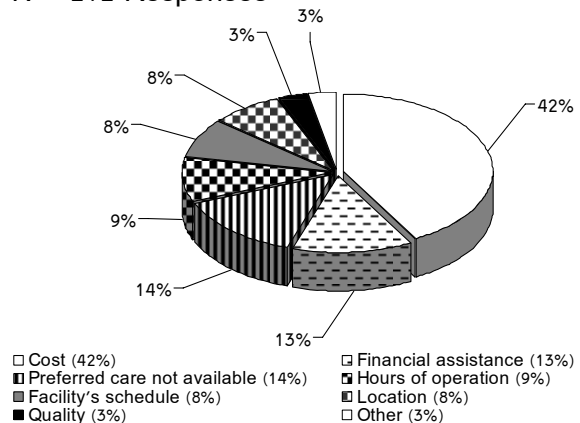
N = 1,275 Children



Note: Percentage totals are rounded to 100%

Reasons Parents Did Not Find Child Care

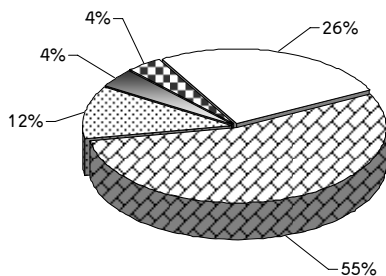
N = 212 Responses



Note: Numbers are based on a 26% sample of families searching for care; parents can give more than one response. Numbers have been extrapolated to the whole.

Child Care Demand (continued) N = Number

License Status of Programs Where Families Found Child Care
N = 374 Responses

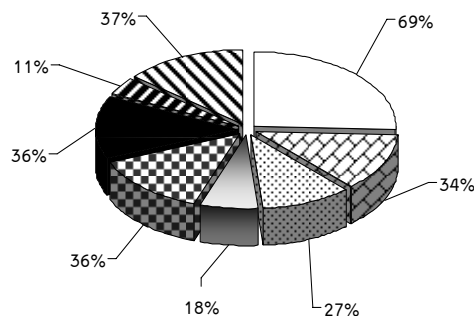


- 5 Star (26%) □ 4 Star (55%) □ 3 Star (11%)
- GS 110-106 (4%) □ License Exempt (4%)

Note: Numbers are based on a 26% sample of families searching for care. Numbers have been extrapolated to the whole.

Source: Child Care Resources Inc.'s database July 1, 2008 – June 30, 2009

Quality Indicators Parents Used When Searching for Child Care
N = 814 Responses



- Star Rating (69%) □ Low staff/child ratio (34%)
- Staff/child interaction (27%) □ Small group size (18%)
- Education of staff (36%) ■ Compliance history (36%)
- Staff stability (lack of turnover) (11%) ■ Age appropriate activities (37%)

Note: Numbers are based on a 26% sample of families searching for care. Parents can give more than one response; therefore, percentages may total more than 100%.

Source: Child Care Resources Inc.'s database July 1, 2008 – June 30, 2009

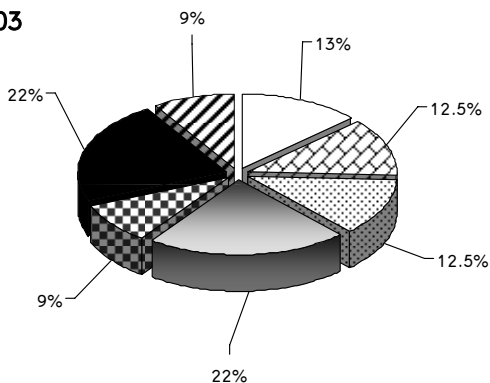
Child Care Subsidy

Child Care Financial Assistance

Total number of calls received by *Child Care Search* (Cabarrus County DSS office) from parents/caregivers needing subsidized child care: 335

Ages of Children Whose Parents Called Seeking Child Care Financial Assistance

N = 503



- Prenatal/under age One (13%) □ One (12.5%)
- Two (12.5%) □ Three/Four (22%)
- Five (9%) ■ Six to Eight (22%)
- Nine and over (9%)

Note: Children of parents seeking child care referrals in addition to subsidy are included with child care demand data.

Source: Child Care Resources Inc.'s database July 1, 2008 – June 30, 2009

Number of Children Receiving Subsidized Care

Number of children receiving subsidized care as of June 30, 2009	1,608
Monthly average of children receiving subsidy from July 1, 2008 – June 30, 2009	1,510
Average monthly waiting list from July 1, 2008 – June 30, 2009	0
Waiting list for subsidized care as of June 30, 2009	0

Source: North Carolina Division of Child Development

Maximum Income Eligibility for Child Care Subsidies 8/01/2007

Family Size	1	2	3	4	5	6
Maximum Gross Monthly/Annual Income	\$1,892/ \$22,704	\$2,475/ \$29,700	\$3,057/ \$36,684	\$3,639/ \$43,668	\$4,221/ \$50,652	\$4,804/ \$57,648
Family Size	7	8	9	10	11	12
Maximum Gross Monthly/Annual Income	\$4,913/ \$58,956	\$5,022/ \$60,264	\$5,131/ \$61,572	\$5,240/ \$62,880	\$5,350/ \$64,200	\$5,459/ \$65,508

Co-payments (% of gross monthly income):
 1-3 children - 10% / 4-5 children - 9% / 6-12 children - 8%

Source: North Carolina Division of Child Development



Child Care Resources Inc.

Cabarrus County Early Education Demographics Report

CABARRUS COUNTY FACTS

Projected Total Population

	2007	2008	2009
Population	164,379	170,509	177,007

Source: Demographic and Economic Analysis Section, NC Office of State Budget and Management; estimates and projections for July 1, 2009, revised as of April 23, 2009

Seasonally Unadjusted Unemployment Rate

	2007	2008	2009
Rate	4.6	5.7	11.7

Source: North Carolina Employment Security Commission, June 2007, 2008 and 2009. 2007 and 2008 figures have been revised by ESC.

Licensed Child Care Programs

	2007	2008	2009
Children Enrolled	5,120	5,432	5,062
Child Care Slots	7,252	8,042	8,413
Programs	103	107	106
Staff Employed	825	890	951

Source: NC Division of Child Development, December 30, 2007, 2008 and 2009

Median Household Income and Living Income Standard

	2005	2006	2007
*Median household income	49,997	49,562	50,779
**Living Income Standard	41,448	N/A	40,470

Note: The Living Income Standard is the income needed for a family of one parent, one infant and one preschool child.

*Source: 2007 American Community Survey

**Source: NC Justice and Community Development Center 2005 and 2008 based on 2007 data

Child Abuse and Neglect (CAN) Data

	CAN reports for all ages (0-17)	Abuse substantiated or family in need of services
Ages 0-6	1,051	187
Ages 7-12	773	86
Ages 13-17	583	52
Age unknown	8	2
Total	2,415	327

Source: NC DHSS Central Registry; referrals made in FY2009; retrieved September 15, 2009

General Information

The federal poverty guidelines are determined according to family size and apply to all but two states.* These guidelines, issued each year by the Department of Health and Human Services (HHS), are a form of measurement that simplifies the poverty thresholds for administrative purposes, such as determining financial eligibility for certain programs. Listed below are the 2008 HHS guidelines.

Single individual = \$10,830	Family of five = \$25,790
Family of two = \$14,570	Family of six = \$29,530
Family of three = \$18,310	Family of seven = \$33,270
Family of four = \$22,050	Family of eight = \$37,010

For each additional person, add \$3,740

*Alaska and Hawaii use different guidelines due to higher living expenses

Source: Federal Register, Vol. 74, No. 14, January 23, 2009 pp 4199-4201

TANF Recipients

	2007	2008	2009
0-5 years	180	176	202
0-17 years	461	430	464

Source: North Carolina Eligibility Information System, July 1, 2007, 2008 and 2009

Food Stamp Recipients

	2007	2008	2009
0-5 years	2,846	3,094	3,766
0-17 years	6,638	7,264	9,279

Source: NC Eligibility Information System, July 1, 2007, 2008 and 2009

Cabarrus County Public School System (2008-2009)

	Schools	Capacity
Pre-K Sites in Schools*	5	354
Elementary Schools	19	13,393
Middle Schools	6	6,403
High Schools	6	7,836
Schools with Special Programs	3	115

*One (1) Pre-K only site and four (4) elementary sites with Pre-K children

Source: Cabarrus County Public School System, 2008-2009

Kannapolis City Schools (2008-2009)

	Schools	Capacity
Pre-K Sites*	3	206
Elementary Schools	5	2,205
Middle School	1	789
High School	1	1,264
Intermediate School	1	750

*One (1) Pre-K only site with Head Start, More at Four and Exceptional Children enrolled in two (2) sites in elementary schools. Numbers only reflect Cabarrus County children enrolled in those classrooms.

Source: Kannapolis City Schools, 2008-2009

Definitions

Center-Based Programs are independently operated or operate in schools, workplaces, individual homes (considered small centers), churches or synagogues. Most are open on a fixed schedule, eight or more hours per day, Monday through Friday. Children in centers are usually grouped by age. As they grow, children often move into the next age group with a different caregiver. All centers must meet state regulations for the legal operation of a child care facility.

Child Care Subsidy — Financial assistance for income eligible families to secure North Carolina Division of Child Development licensed child care while parents/guardians are working, attending school or job training activities.

Exceptional Children's Programs are public pre-kindergarten programs that assure that children with varying abilities have the opportunity to develop mentally, physically and emotionally when provided with an appropriate individualized education in the least restrictive environment with their typically developing peers. The program serves children ages three, four and those five year olds not age eligible for kindergarten. Parents have the opportunity to be actively involved in meaningful ways in their child's education. (Based on IDEA – P.L. 94-142)

GS 110-106 (Religious-sponsored child care facilities) are child care facilities or summer day camps operated by a church, synagogue or school of religious charter. While exempt from licensure, they must file a notice of intent to operate as a child care facility with the state. A religious-sponsored child care facility may choose to seek licensure, but if it does not, it must still meet state licensing requirements with the following exceptions: staff qualifications, staff training, written activity plans and developmentally appropriate activity centers.

Head Start and **Early Head Start** are federally-funded programs that provide free, comprehensive developmental services for children ages birth to five from low-income eligible families. These programs are child-focused and family centered.

Licensure — Legal permission, granted by the North Carolina Division of Child Development, to operate a child care facility for more than two children for more than four hours a day. A license is issued according to the rules and regulations set forth by federal and state laws or local ordinances pertaining to a child's health, safety and welfare.

Licensed Family Child Care Homes (FCCH) are operated by individuals who provide care in their homes for more than two children who are not related to them. These programs offer a home-like setting that provide the opportunity for siblings to stay together. A licensed FCCH may care for up to eight children, with no more than five preschool children in care at any given time. The caregiver's own preschool-age children must be included in the number of preschoolers. However, their school-age children are not counted for licensing purposes. FCCH's must provide age-appropriate toys and activities, nutritious meals and snacks and meet basic health and safety standards. All FCCH's must meet licensing regulations for the legal operation of a child care facility.

Legally Exempt Family Child Care Homes are allowed to care for two non-related children in addition to their own without being licensed by the state.

Montessori Curriculum is an individualized program of education based on the philosophy that children learn through their own experiences in a carefully prepared, ordered and responsive environment. Included in the environment are didactic and sequenced materials geared toward promoting children's education in four areas: development of the senses, conceptual or academic development, competence in practical life activities and character development.

More at Four is a statewide, voluntary program that prepares eligible four-year-old children for school success by providing them with high quality pre-kindergarten experiences. The curricula used are child-centered, have a literacy and language focus and include parent participation. More at Four classrooms operate in centers and school settings for six hours per day, follow the public school calendar and have no more than a one-to-nine staff-to-child ratio.

NAA Accreditation — Accreditation standards for programs offering care to school-age children. The standards were developed by the National AfterSchool Association (NAA), a professional support network promoting quality programs for children and youth in their out-of-school time. NAA accredits programs that meet these quality standards, based on a self-study and a NAA Endorser's ratings of compliance with the standards.

Definitions (Cont'd.)

NAEYC Accreditation — Accreditation standards for early education programs (full-day and part-day). The National Association for the Education of Young Children (NAEYC) has developed a set of quality standards that programs must meet to receive accreditation. Receipt of accreditation indicates that an early education program provides a high quality learning environment for children that exceeds the threshold for quality set by licensing requirements. Programs must complete a self study, submit an application, and have ratings verified by an NAEYC Validator.

School-Age Child Care refers to programs for children before and/or after school hours and during school holidays and vacations. Family child care homes, child care centers and schools typically offer this type of care. Programs that operate for four hours or less per day are license-exempt, but may voluntarily seek state licensure or pursue national accreditation.

Part-Day Preschools operate for four hours or less per day serving children between the ages of birth-five years. License-exempt part-day preschools may voluntarily seek licensure and may pursue national accreditation. Typically, part-day programs operate on the same calendar year as the public school system, serving families where one parent is not employed full-time. Faith organizations and community-based not-for-profit organizations are the primary sponsors of part-day programs.

Public Pre-Kindergarten Programs include center-based classrooms for four-year olds that are fully or partially publicly funded and operate under the direction of state, local and federal education and human service agencies.

Probationary License — A facility may be placed on probationary status when NCDCCD determines that violations of child care requirements have been willful, continual or hazardous to the health or safety of children. This status shall not exceed one year.

Provisional License may be issued for up to 12 months when NCDCCD determines that an operator is making a reasonable effort to comply fully and maintain compliance with all licensing requirements, to give the operator an opportunity to correct violations regarding building, fire and sanitation requirements and/or when child abuse or neglect occurred in a child care facility.

Star Rated License — Programs that apply for a 2- to 5-star license will be assessed under a two-component system that uses 1) Program Standards and 2) Staff Education to determine the license points for the star rating. In addition, all child care programs, regardless of the type of license they have, will also be required to maintain a 75% Compliance History. An additional "quality point" may be earned by child care programs to meet additional education or programmatic criteria not addressed under the Program Standards or Staff Education components.

Summer Day Camps are generally designed for school-age children and operate during the day for less than four months. They may be offered by child care centers, colleges, recreation sites, faith-based groups or other sponsoring organizations. This type of program is exempt from state licensure.

Temporary License is given by the North Carolina Division of Child Development for a period of six months to a new program or to a previously licensed program (when a change in ownership or location occurs) after which it may apply for a higher than one star rating.

**For more information
call (704) 348-2181**



Mecklenburg County / Main Offices

4601 Park Road, Suite 500
Charlotte, NC 28209
(704) 376-6697

Cabarrus County Office

2353 Concord Lake Road, Suite 160
Concord, NC 28025
(704) 786-1023

Union County Office

105-A Cedar Street
Monroe, NC 28110
(704) 238-8810

email: mailbox@childcareresourcesinc.org
www.childcareresourcesinc.org

© 2006, *Child Care Resources Inc.*



United Way
of Central Carolinas



North Carolina Division
of Child Development

June 2009 Report (As of June 30, 2009)

© 2006, *Child Care Resources Inc.*